

Welcome to

SPRING 2022
Volume XXI, Issue III

AMITY TOWNSHIP

Berks County, Pennsylvania



Board of Supervisors

Kim McGrath, Chair
David Hackett, Vice-Chair
Terry Jones • Paul Weller
Kevin Keifrider

Township Manager

Troy S. Bingaman

Township Hours

Monday-Friday 8:00am-4:30pm

In This Issue:

2022 Budget Adopted.....	3
Digital Newsletter.....	3
Code Department.....	4
Tax Collector.....	4
Recycling for 2022.....	5
Monocacy Hill.....	6
Dead Trees.....	6
The Spring Flowers of Monocacy Hill.....	7
MS4.....	8
When It Rains, It Drains.....	9
Stop the Spread.....	10-11
Winter Weather.....	12
Permits.....	13
Carbon Monoxide Alarms.....	13
Lighting Safety.....	14
Vacation Check.....	14

F.O.G MONSTER

What do you do after frying bacon? Hopefully you are storing the grease in a container (like a coffee can) until it solidifies and disposing of it. Although when hot grease is a liquid, when dumped down the drain, the grease reaches cooler temperatures it will solidify and can cause issues in your plumbing system. Dumping fats, oil and grease into drains can also create havoc in public sewer systems. Many communities refer to this problem simply as the F.O.G monster (Fats, Oils, Grease) or the CLOG monster since he is the main cause of sewer clogs.

The F.O.G. monster will continue growing larger as people continue to pour fats, oil and grease down drains and cause sewer back-ups. Sewer back-ups can become a stinky and costly mess! The only way to control the F.O.G. monster is to educate the public and ensure no fats, oil and grease go down the drain. When fats, oil and grease harden, tiny bits stick together as they flow down the sewer pipe. Clumps attach to the solids normally found in the sewage and larger masses grow. Soon these clumps start to stick to the sides of the pipes and slow down the flow of the sewage. The slower flow promotes the growth of larger and larger clumps. The situation worsens until the sewer pipe is clogged and the stuff starts to back up. The result is a mess that nobody wants to deal with.

Fats, oils, and grease are usually byproducts of cooking that can be found in meats, lards, cooking oils, butter, margarine, shortening, creams, sauces, salad dressings and dairy products. Even a small amount of grease that goes down the drain as you are cleaning up after cooking will combine with the grease from your neighbors. Soon, another F.O.G monster is created. The easiest way to solve this problem and help prevent backups and sewage overflows is to keep F.O.G out of the system. Here's what you can do to help:

- Do not pour oil, grease, or fats down the drain.
- Soak up the grease after frying with paper towels and put in trash.
- Pour larger amounts of used cooking grease into a container with a lid. Refrigerate to harden, and then place in trash. (Great way to recycle containers from take-outs.)
- Minimize the use of your garbage disposal. Put food scraps into the garbage.
- Never pour motor oils down the drain! This is illegal.

As you start your New Year's diets, remember to put the F.O.G. monster on a fat-free diet too!



www.amitytownshippa.com | Phone 610-689-6000

TOWNSHIP BUILDING
2004 WEAVERTOWN ROAD | DOUGLASSVILLE, PA 19518



BERKSHIRE INSURANCE SERVICES

Our Great Reviews Speak Volumes!

- We match **your** protection needs with the most competitive company in your zip code.
- For savings and excellent service - **read our online reviews and give us a call at 610.413.9880.**



www.BerkshireInsuranceServices.com



Dengler Funeral Home, Inc.

Serving the Community since, 1959

Gail R. Dengler, Supervisor

Jeffrey P. Sowers, Funeral Director

144 North Spruce Street

Birdsboro, Pennsylvania 19508

Phone: (610) 582-2292

Fax: (610) 582-2291

Email: denglerfuneralhome@dejazzd.com

Where residents truly become family.



At Keystone Villa at Douglassville, we help seniors live the life they want in a community they love.



A DISTINCTIVE RETIREMENT COMMUNITY
Celebrating seniors for 15 years and counting!

To Learn More Call:

Independent Living
610-385-5000

Personal Care
& Memory Care
610-385-5002

1180 & 1152 Ben Franklin Hwy E., Douglassville, PA 19518 • KeystoneVillaAtDouglassville.com



Nathan M. Lee, CRPC®
Advisory Representative

Lincoln Financial
Securities Corporation
Branch Office
8 E. Church Lane
Douglassville, PA 19518

Nathan M. Lee is a registered representative of and offers securities and advisory services through Lincoln Financial Securities Corporation, Member SIPC. Lincoln Financial Securities Corporation is a member of the Lincoln Financial Group which is the marketing name for Lincoln National Corporation and its affiliates.

bus 484 200 8423
cell 610 212 6373
n.lee@securitiesmail.com

New Rhoads

Transportation

- Weddings & Proms
- Bachelor(ette) Parties
- Anniversaries
- Birthdays
- Concerts & Theatre
- Sporting Events
- Airport Transfers
- Shuttle Services



Sedans,
Luxury Vans,
Limousines
and more!



Rhoads

Limousine



RHOADSLIMOS.COM

610.689.4600

800.528.3569

1816 Weavertown Road, Douglassville, Pa 19518



QUALITY
WORKMANSHIP
EXCEPTIONAL
SERVICE

ELITE RESULTS



Residential & Commercial
CONSTRUCTION SERVICES

610.385.0475

DSEliteConstruction.com

#PA001928

SUBWAY®

**ANY 6-INCH MEAL
DEAL FOR \$6.49**

Meal includes a 6-inch sub, a bag of chips and a 20 oz. drink.

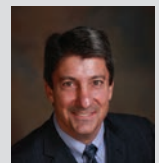
Valid only at:
955 Benjamin Franklin Hwy
Douglassville PA 19518



Owned/Operated by Amity Twp Resident

Limited time only at location listed. Extras at additional cost. All chip-related trademarks are owned by Frito-Lay North America, Inc. ©2019. Subway® is a Registered Trademark of Subway IP LLC. ©2019 Subway IP LLC.

Kozloff Stoudt Attorneys



Brian F. Boland
Esquire

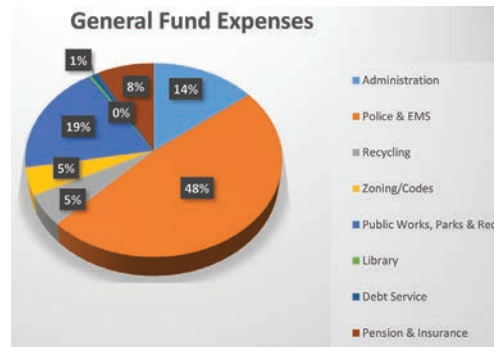
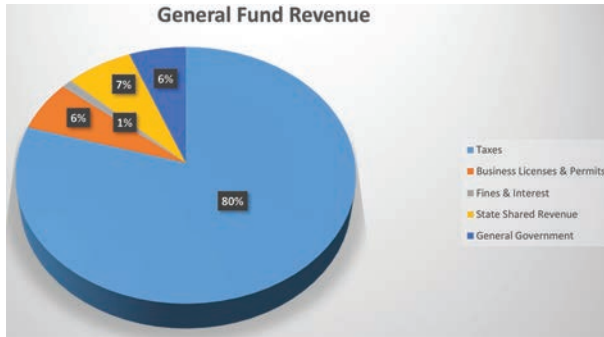
2640 Westview Drive
Wyomissing, PA 19610

610-670-2552
(fax) 610-670-2591

www.kozloffstoudt.com

2022 BUDGET ADOPTED

The Board of Supervisors adopted a 2022 Budget on November 17th. The General Fund Budget of \$5.6m, includes an additional Police Officer as well as an Administrative Assistant and required an increase in the tax millage from 2.1 to 2.4 mils. This equates to an increase of \$30/year for each \$100,000 of assessed value. The Fire tax and Recreation tax remain flat at .55 and .15 mil respectively. If your home is assessed at \$150,000, your Township Real Estate tax bill would be 150 x 3.1 mil or \$465.00. Your real estate tax supports the operation of our Township, including Police, Fire, Public Works (road maintenance, snow removal, street sweeping, roadside mowing, sign maintenance, park maintenance, leaf and yard waste collection and disposal, etc.), Recycling, Administration, Zoning and Codes. The pie charts below show the sources and percentages for each revenue category as well as the uses and percentages for each department's annual expense.



2022 Real Estate Tax



Our 2022 Sewer budget of \$2,503,776 is supported by revenues of \$2,489,888 (this assumes an increase of \$5 per quarter, proposed for mid-year). As of now, sewer rates remain flat at \$125 per quarter per EDU. Amity is in the process of updating our Act 537 Plan for the Wastewater Treatment Plant. We expect significant upgrades to be needed, as our plant is aging, and capacity is limited. With the recent passage of the Federal Infrastructure Bill, we are hoping to have an opportunity to apply for funding to complete the improvements which will be dictated by our Act 537 Plan. Sewer rates will be revisited in the second quarter to determine whether an increase will be needed beginning with the July 2022 billing.

DIGITAL NEWSLETTER

Change is inevitable. Amity Township remains progressive, including the way the Township communicates to our residents. Although our timing was not perfect, the newsletter has gone digital. This is the last issue that you will receive via US Mail. Once signed up, you will continue receiving all the news and information that is important to you. What's better, is you don't have to remember to take along the mail to read the news. Just open your email and read it whenever it's convenient for you! Should you decide for any reason to discontinue receiving the newsletter via email, you can simply click the unsubscribe button and you will no longer receive newsletters via email. Already receiving too many emails and prefer not to add another? All newsletters are placed on the Township website for those who prefer to read it at their leisure without receiving an email.

If you haven't already signed up, it's not too late! You can sign-up at any time at our website at www.amitytownship.com, on our Facebook page, or by calling 610-953-0017 or emailing pkisch@amitytownship.com.

We'd like to send one last sincere thank you to all of our local businesses who have supported us throughout the years. We couldn't have provided the news so well all these years without you!



CODE DEPARTMENT

On-Lot Tanks – Required to Pump and Inspect Every 3 Years

Although some septic haulers recommend pumping your system every two (2) years, Amity Township Ordinance regulations, which were mandated to match PA DEP regulations, require all on-lot septic tanks to be pumped and inspected every three (3) years. In the spring of the year in which you are required to pump, a reminder is mailed to each homeowner by the Township explaining the program. Additionally, an expiration date is listed on the Certificate of Compliance you received during your last cycle. It lists the year you are to have it pumped and inspected. Should you choose to have it pumped on a non-required year, please keep the hauler's inspection report card and pump slip and turn it in when you receive the spring reminder letter. Amity Township accepts pumping report cards within one year from the date you turn it in. You will then be required to meet the Ordinance three (3) years from the time you had it pumped. Feel free to call 610-953-0023 for any additional information.

RV Parking on Properties

Parking RVs and other trailers is permitted on your lot any time of the year with a couple specific exceptions. They may not be parked in front of the front yard building setback line. These setback lines are as follows: Woods Edge, High Meadows Estates, Sunset Knoll and some of Greenbriar Estates have a front yard setback line of forty (40') feet. Westridge, Amity Gardens, Lenape Farms, Rosecliff Pointe, Sunrise Hills, Pond View, Cider Mill Run, Pleasant Meadows, Glenwood Estates, Far Hill Farms and some of Greenbriar Estates have a front yard setback line of thirty (30') feet. Front property lines are generally two (2') feet in from your side of the sidewalk. Yellowhouse and Indian Run Subdivisions have a front yard setback line of fifty (50') feet. These front property lines are twenty-five (25') feet from the centerline of the street. Although you might think a driveway is ok, most driveways are within this nonpermitted area. Please park your RVs in a permitted location. Illegally parked vehicles can lead to enforcement action. Call 610-953-0023 if you need further information.



Although you might think a driveway is ok, most driveways are within this nonpermitted area. Please park your RVs in a permitted location. Illegally parked vehicles can lead to enforcement action. Call 610-953-0023 if you need further information.

Thanks for your cooperation, Code Enforcement Department

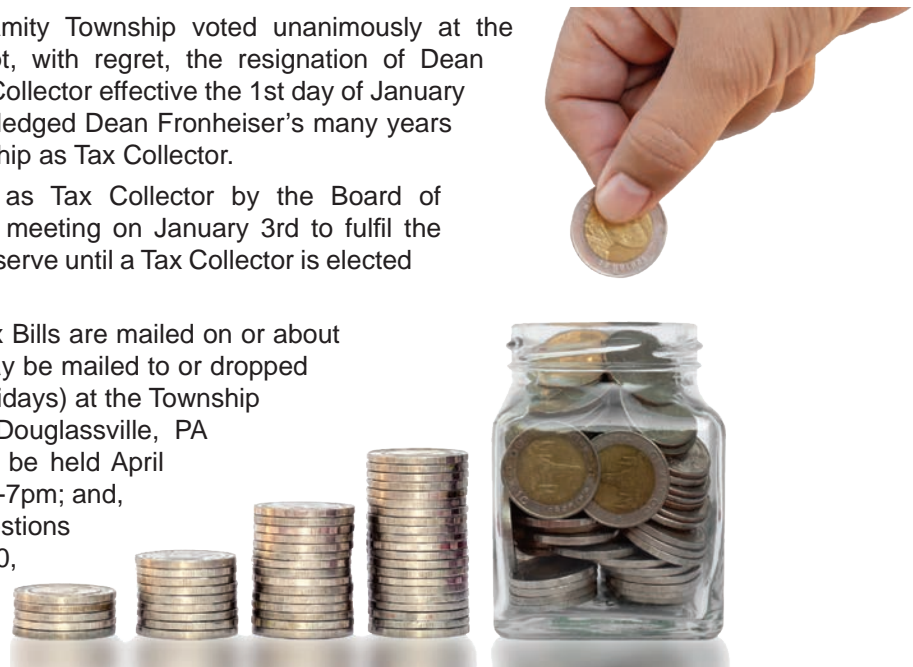
TAX COLLECTOR

The Board of Supervisors of Amity Township voted unanimously at the December 15th meeting to accept, with regret, the resignation of Dean Fronheiser as Amity Township Tax Collector effective the 1st day of January 2022. The Board gratefully acknowledged Dean Fronheiser's many years of outstanding service to the Township as Tax Collector.

Lisa Bingaman was appointed as Tax Collector by the Board of Supervisors at the Reorganization meeting on January 3rd to fulfil the duties of the Tax Collector. Lisa will serve until a Tax Collector is elected by taxpayers in 2024.

Township/County Real Estate Tax Bills are mailed on or about March 1st each year. Payments may be mailed to or dropped off (M-F 8a-4:30pm – except on holidays) at the Township Office, 2004 Weavertown Road, Douglassville, PA 19518. Additional sitting hours will be held April 29th, June 29th and June 30th 4:30-7pm; and, April 30th from 8am - 10am. Questions may be directed to 610-689-6000, option 1.

Tax Certifications required for property transfers or refinancing, and duplicate bills can be obtained by emailing taxcollector@amitytownship.com. There is a \$25 fee for Certifications and a \$5.00 fee for a duplicate bill, payable to Amity Township.



RECYCLING FOR 2022

Eagle Disposal will continue collecting recyclables for 2022. Place recycling containers outside Tuesday night for Wednesday collection. Collection has been scheduled for Thursday in weeks where holidays fall on a Monday, Tuesday or Wednesday. Please call 610-953-0016 to report missed collection.

2022 Amity Township Recycling Collection Calendar

January							February							March							April							
S	M	T	W	T	F	S	S	M	T	W	T	F	S	S	M	T	W	T	F	S	S	M	T	W	T	F	S	
						1			1	2	3	4	5			1	2	3	4	5							1	2
2	3	4	5	6	7	8	6	7	8	9	10	11	12	6	7	8	9	10	11	12	3	4	5	6	7	8	9	
9	10	11	12	13	14	15	13	14	15	16	17	18	19	13	14	15	16	17	18	19	10	11	12	13	14	15	16	
16	17	18	19	20	21	22	20	21	22	23	24	25	26	20	21	22	23	24	25	26	17	18	19	20	21	22	23	
23	24	25	26	27	28	29	27	28						27	28	29	30	31			24	25	26	27	28	29	30	
30	31																											

May							June							July							August							
S	M	T	W	T	F	S	S	M	T	W	T	F	S	S	M	T	W	T	F	S	S	M	T	W	T	F	S	
1	2	3	4	5	6	7				1	2	3	4							1	2		1	2	3	4	5	6
8	9	10	11	12	13	14	5	6	7	8	9	10	11	3	4	5	6	7	8	9	7	8	9	10	11	12	13	
15	16	17	18	19	20	21	12	13	14	15	16	17	18	10	11	12	13	14	15	16	14	15	16	17	18	19	20	
22	23	24	25	26	27	28	19	20	21	22	23	24	25	17	18	19	20	21	22	23	21	22	23	24	25	26	27	
29	30	31					26	27	28	29	30			24	25	26	27	28	29	30	28	29	30	31				
														31														

September							October							November							December						
S	M	T	W	T	F	S	S	M	T	W	T	F	S	S	M	T	W	T	F	S	S	M	T	W	T	F	S
				1	2	3						1			1	2	3	4	5						1	2	3
4	5	6	7	8	9	10	2	3	4	5	6	7	8	6	7	8	9	10	11	12	4	5	6	7	8	9	10
11	12	13	14	15	16	17	9	10	11	12	13	14	15	13	14	15	16	17	18	19	11	12	13	14	15	16	17
18	19	20	21	22	23	24	16	17	18	19	20	21	22	20	21	22	23	24	25	26	18	19	20	21	22	23	24
25	26	27	28	29	30		23	24	25	26	27	28	29	27	28	29	30			25	26	27	28	29	30	31	
							30	31																			

 = Recycling Collection

Observed holidays are noted in **RED**. Collection days that fall on or after the holiday will be delayed one day. **EXCEPTION:** If holiday falls on a Saturday or Sunday, there is no change in service prior to or after the holiday.

BASIC SERVICE INFORMATION

- Recycling must be curbside by 6:00 AM on your scheduled collection day, which is Wednesday, except as noted on the calendar when a holiday delays collection one day. Residents on routes 422, 662 and 562 must be out by 4:00 AM.
- Extra Containers: If you wish to use an extra container for recycling collection, simply pick up a recycling sticker from Eagle Disposal or the Township building and place it on any container up to 35 gallons and make sure the sticker is visible to the collection crew.
- Recyclables will be collected with a truck that will resemble a trash truck.
- Please reference the Accepted Recyclables section on the reverse side of this mailer to ensure that you are placing the right material in your recycling bin.

Eagle Disposal of PA, Inc. • PO Box 288 • 1245 Eagles Way • East Earl, PA 17519 • www.eagledisposalofpa.com

What can be placed in recycling bins?

- Paper and cardboard (no books, no contaminated pizza boxes)
- Wax cartons, milk, juice, soup, flavored drinks and cartons
- Aluminum and steel containers
- Glass (no window glass, mirrors or light bulbs)
- Plastics #1 through #7 (no toys, styrofoam or ceramics)

Please continue to recycle as much as possible. It's convenient, saves you trash bags and helps keep items from filling the landfill. The more recyclables collected, the more opportunity the Township has to apply for DEP recycling grants, which ultimately saves taxpayer dollars!

MONOCACY HILL

Below are some pictures of the recent improvements at Monocacy Hill. Eagle Scout Shawn Selbst planned and wrote the text for the sign that was placed along the Stonewall Trail near the sight of Sallie Shirey's homestead. Stop by to enjoy the outdoors and delve into some history about how life was lived in the 1800's in Amity Township. A bench was placed nearby.



Location Markers are located along the walking trails at Monocacy Hill. These markers are important for first responders trying to locate lost or injured individuals. These location markers were installed in 2013 by Eagle Scout Vaughn Thren of Troop #521.

Amity Township is proud to see so many of our young residents become Eagle Scouts and appreciates their dedication to the Community.

DEAD TREES – PROPERTY OWNER RESPONSIBILITY

As you look around the Township, it's easy to see the damage the Emerald Ash Borer and the Spotted Lanternfly have had on our local trees. Trees on private property that appear to be unhealthy and at risk of falling in proximity of a public street must be addressed by property owners. The dead or damaged trees can be a danger to those on your personal property and to those who travel on the street adjoining your property. If left unaddressed, the tree could fall and property owners will be held responsible for any and all costs incurred by the Township for clearing debris from the street and/or repairing road surfaces.

This past fall, property owners were mailed letters if tree(s) on their property were identified as such a hazard. If you received a letter, please have a professional investigate the condition of the tree and take prompt action based upon their analysis. If you received this letter and have any questions, please contact Patrick Moore at 610-953-0018.

The Spring Flowers of Monocacy Hill



Bloodroot
Sanguinaria canadensis
(Papaveraceae)



Early Saxifrage
Saxifraga virginensis
(Saxifraga)



Rue Anemone
Thalictrum thalictroides
(Ranunculaceae)



Trout Lily
Erythronium americanum
(Liliaceae)



Round Lobed Hepatica
Anemone americana
(Ranunculaceae)



Spring Beauty
Claytonia virginica
(Portulacaceae)



Common Blue Violet
Viola papilionacea
(Violaceae)



Wild Ginger
Asarum canadense
(Aristolochiaceae)



May-apple
Podophyllum peltatum
(Berberidaceae)



Wild Geranium
Geranium maculatum
(Geraniaceae)



Jack-in-the-pulpit
Arisaema triphyllum
(Araceae)



Cut-leaved Toothwort
Dentaria laciniata
(Cruciferae)



Nodding Trillium
Trillium cernuum
(Liliaceae)



Showy Orchis
Galearis spectabilis
(Orchidaceae)



Perfoliate Bellwort
Uvularia perfoliata
(Liliaceae)



Columbine
Aquilegia canadensis
(Ranunculaceae)



Pennywort
Obolaria virginica
(Gentianaceae)



Virginia Bluebell
Mertensia virginica
(Boraginaceae)



Solomon's Seal
Polygonatum biflorum
(Liliaceae)



False or Plumed Solomon's Seal
Maianthemum racemosum
(Liliaceae)

- Family**
- Arum
 - Lily
 - Poppy
 - Iris
 - Orchid
 - Purslane
 - Forget-me-not
 - Saxifrage
 - Gentian
 - Mustard
 - Buttercup
 - Violet
 - Geranium
 - Birthwort
 - Barberry

MS4 MATTERS

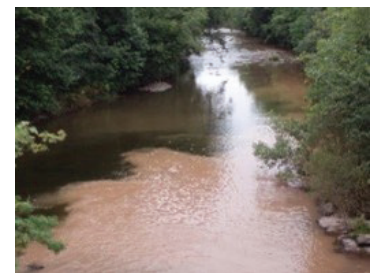
What is an MS4 and where do MS4 regulations come from?

The federal Clean Water Act (CWA) prohibits the discharge of pollutants into United States' waterways without an associated permit. Pennsylvania and its Department of Environmental Protection (PA DEP) regulate the discharge of pollutants through multiple programs in order to meet the runoff related requirements set forth by the federal CWA. The MS4 program in particular regulates and permits discharges from **municipal separate storm sewer systems** (MS4). An MS4 is a system of stormwater conveyances (i.e. storm drains, pipes, ditches and outfalls) that drain directly to waterways and are owned by a state, city, town, village or other public entity.

Amity Township is a regulated MS4 area, therefore the township is required to develop and implement a stormwater management program which incorporates six minimum control measures to reduce contaminated stormwater runoff:

- Public education and outreach
- Public involvement and participation
- Illicit discharge detection and elimination
- Construction site runoff control
- Post-construction stormwater management in new development and redevelopment
- Pollution prevention and good housekeeping for municipal operations and maintenance

Untreated or uncontrolled stormwater runoff is the leading cause of impairment to our local waterways and the number one cause of water pollution throughout the United States. Stormwater runoff can pick up debris, chemicals, grass clippings, dirt (yes, excess dirt in our waterways is a pollutant) and other pollutants then flow into a storm sewer system or directly into a lake, stream, river, wetland or coastal water, completely untreated. Pennsylvania's MS4 program is ultimately aimed at protecting water quality through pollution reduction at a municipal level.



Be the solution to stormwater pollution!

GRASS CLIPPINGS, dirt, debris, garbage, and chemicals that run into our storm drains will flow (untreated) to our rivers.

WHEN IT RAINS, IT DRAINS IT ALL HAS TO GO SOMEWHERE

Water from inside our homes goes to a wastewater facility for purification. But water from roofs, streets, and outdoor spigots goes untreated directly into storm drains - straight to our waterways - picking up all kinds of contaminants along the way!

DID YOU KNOW

Excess nutrients, specifically nitrogen and phosphorus, pollute stormwater run-off from urban areas, contributing to **the third greatest cause of lake deterioration** in the US.

DID YOU KNOW

DID YOU KNOW

DID YOU KNOW

DID YOU KNOW

DID YOU KNOW

STOP THE SPREAD



County of Berks officials declared a local disaster emergency for Berks County, effective December 30, 2021, to give the County the ability to respond as quickly as possible to resurgent COVID-19 issues. The declaration allows the County, through its departments and agencies, to modify standard operational processes and expedite the ability to obtain necessary resources and make important emergency decisions.

The declaration is not a cause for alarm, but a legal mechanism that allows County government to mobilize quickly and effectively to respond to the current public health emergency. The declaration is in direct response to the sudden increase in COVID-19 cases and its impact on healthcare and the delivery of critical public safety and other county government services.

When should I seek out a COVID-19 test?

If you are exhibiting COVID-19 symptoms, but are at a **minimal risk**, consider simply isolating until symptoms subside to preserve testing capacity for those with high risk and may need a positive test in order to seek supportive therapies and treatment. Please consult with your doctor or telehealth provider if you are unsure. If you are at a **high risk or are experiencing severe symptoms**, please seek testing and/or medical attention immediately.

If you have been exposed, please wait to seek testing until 5 days after the exposure, if you do not have any symptoms. Testing too soon after an exposure can be a waste of important resources.

Vaccine providers in Berks County continue to offer appointments and clinics for the COVID-19 vaccines and booster shots. A list of local providers, upcoming clinics and how to sign up for appointments is available at www.doyourpartberks.com/covid-19-vaccine-information.

Continue doing your part by following these safety precautions:

- Wear a mask.
- Practice social distancing.
- Wash your hands often with soap and water for at least 20 seconds. When soap and water is not available, be sure to use hand sanitizer with at least 60% alcohol.
- Get vaccinated, and when able to, get your booster.



The Township Supervisors and Administration thank and recognize the businesses that appear in this newsletter and prior issues as supporters of our community. For it is with their participation that this newsletter has been published at no cost to our residents. Don't forget this is the last printed issue you will receive. Be sure to sign up for the new digital newsletter!

Stop the Spread of Germs

Help prevent the spread of respiratory diseases like COVID-19.



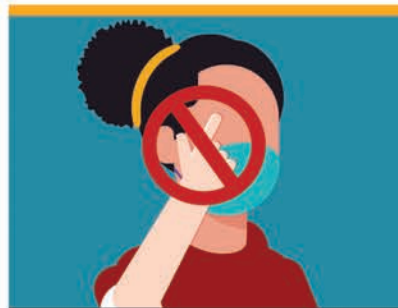
Stay at least 6 feet
(about 2 arms' length)
from other people.



Cover your cough or sneeze with a
tissue, then throw the tissue in the
trash and wash your hands.



When in public, wear a
cloth face covering over
your nose and mouth.



Do not touch your
eyes, nose, and mouth.



Clean and disinfect
frequently touched
objects and surfaces.



Stay home when you are sick,
except to get medical care.



Wash your hands often with soap
and water for at least 20 seconds.



[cdc.gov/coronavirus](https://www.cdc.gov/coronavirus)

316917-A May 13, 2020 11:00 AM

WINTER WEATHER

As of January, we haven't seen much winter weather, but we know it's coming! Here's some helpful hints to help you get through the rest of the winter weather:

Under International Property Maintenance Code, Section 302.3.1, where sidewalks exist those responsible for sidewalks shall have at least a two-foot wide path cleared of snow and ice within 24-hours after cessation of the snowfall. You must comply immediately to avoid penalties. Penalties can include fines not to exceed \$1,000.00 per day until resolved.

Plow or shovel your snow to the side of your driveway, away from the flow of traffic. Clearing snow for a distance before your driveway allows the plow to "unload" before reaching your driveway.

Additionally, by piling snow away from the direction of oncoming snow plows, the bulk of the snow will not be pushed back onto your driveway making less work for you later! If the snow plow deposits snow in your driveway, please know this is **not** done intentionally. Our crews tend to work long hours during some storms to remove snow and ice to make sure all Township roads are safe for you and your family.

Do not shovel snow into the street! Shoveling or throwing snow into the street at any time can cause safety issues, not to mention it's against the law, per Chapter 7, Section 104.

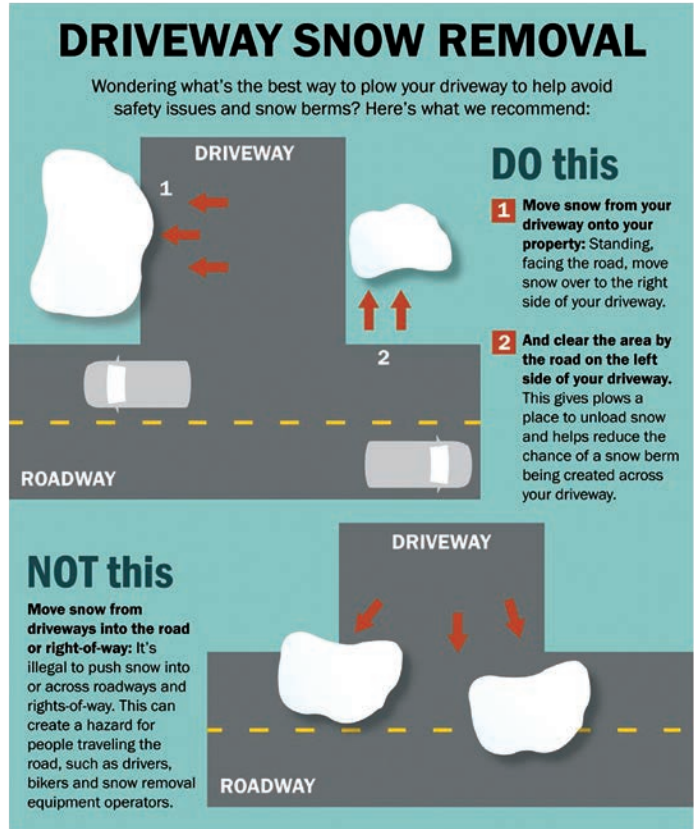
Please place recycling bins back from the curb as far as possible during snow events to prevent Township crews from knocking them over while plowing.

Keep an eye on the weather! Per Chapter 19, Section 403, whenever there is accumulation of 1" or more of snow and/or ice, you must remove your vehicle from the street. Police will issue violations of \$40.00 per day for vehicles left on the street with 1" or greater accumulation. You may want to have a back-up plan. If you're not home and your vehicle is on the street, having someone able to move it for you during a winter storm is a quick savings of \$40.00!

Lastly, please help firefighters by making sure hydrants are accessible! If you have a fire hydrant near your house, please remove ice and snow, clear a 3-foot by 3-foot perimeter around the hydrant and clear a path from the hydrant to the street.

Winter Driving Tips from AAA

- Stay Home – Go out only if necessary. It's better to avoid unnecessary risks by venturing out.
- Drive Slowly – Always adjust your speed down to account for lower traction when driving on snow and/or ice.
- Accelerate and decelerate slowly – Apply the gas slowly to regain traction and avoid skids. Don't drive in a hurry and take time to slow down for a stoplight. Remember, it takes longer to slow down on icy roads.
- Increase your following distance – to five to six seconds. This increased margin of safety will provide the longer distance necessary if you need to stop.
- Know your brakes – Whether you have antilock brakes or not, keep the heel of your foot on the floor board and use the ball of your foot to apply firm, steady pressure on the brake pedal.
- Don't stop if you can avoid it – There's a big difference in the amount of inertia it takes to start moving from a full stop versus how much it takes to get moving from a full stop. If you can slow down enough to keep rolling until a traffic light changes, do it.
- Don't power up hills – Applying extra gas on snow-covered roads will just make your wheels spin. Try to get a little inertia going before you reach the hill and let that inertia carry you to the top. As you reach the crest of the hill, reduce your speed and proceed downhill slowly.
- Don't stop when going up a hill – There's nothing worse than trying to get moving up a hill on an icy road. Get some inertia going on the flat roadway before you take on the hill.



IS A PERMIT REQUIRED?

YES

NO

New Deck
 Placing a Shed
 Installing a Fence
 Building Addition
 Garage Addition
 Brick/Concrete Patio
 Retaining wall >4' High
 Erecting a Sign
 New Homes
 New Gas Piping
 Backup Generator

All Pools >24" deep
 Home Business
 Demolition of Structure
 Roof over Patio
 New Electrical Circuit
 New Plumbing Line
 Enlarging Driveway
 Sidewalk Replacement
 All Commercial Work
 Structural Change or Repair
 Finishing Basement

Roofing Replacement
 Gutter Work
 Dog Fence
 Landscaping
 Painting
 Carpeting
 Cabinetry
 Acoustical Ceiling
 Swing Set
 Trampoline
 Security System
 Fence Repair

Plumbing Fixture Replacement
 Electrical Device Replacement
 Resurfacing Driveway
 Non-Load Bearing Wall
 Retaining Wall <4 ft Height
 Communication System
 Same Size Window Replacement
 HVAC Appliance Repair
 Propane Tanks & Piping
 Fish Pond or Pools <24"
 Tree Removal or Pruning

Permit applications are available online or at the Township office. The Township accepts credit cards and checks over the phone. You can even have your permit mailed to you!



CARBON MONOXIDE ALARMS

Carbon monoxide (CO) is a colorless, odorless toxic flammable gas formed by incomplete combustion of carbon. CO can be produced when fuel-fired (e.g. gas, oil, wood, pellets) appliances don't function properly or when any vehicle is running continuously. CO alarms play an important role in protecting the public against carbon monoxide poisoning. Studies have shown that the severity of CO poisoning is based upon the concentration of CO in a victim's bloodstream. Symptoms may progress from a slight headache to nausea, dizziness, drowsiness, vomiting, collapse and ultimately death as carboxyhemoglobin (COHb) levels increase in the bloodstream and displace oxygen.

In 2010, the International Residential Code (IRC) required the installation of CO alarms in new home construction or whenever renovations are undertaken, when a fuel-fired appliance or attached garage is present in the home. They had never been required prior to that, so it's a good chance there aren't any CO alarms in your home if it was built before 2010. We recommend you consider installing CO alarms as specified in the IRC, if your home has these conditions and has no CO alarms in place.

The alarms should be installed outside of each separate sleeping area in the immediate vicinity of the bedrooms. Where a fuel-burning appliance is located within a bedroom, a carbon monoxide alarm shall be installed within the bedroom. Make sure the CO alarms are listed in accordance with UL 2034. Combination carbon monoxide and smoke alarms are permitted and shall be listed in accordance with UL 2034 and UL 217. In existing homes, CO alarms may be battery supplied only and are not required to be interconnected with other alarms. If none are present, please consider adding this safety equipment to your home.



If you have any questions regarding carbon monoxide alarms and/or permits, please call Steve Loomis at 610-953-0023.



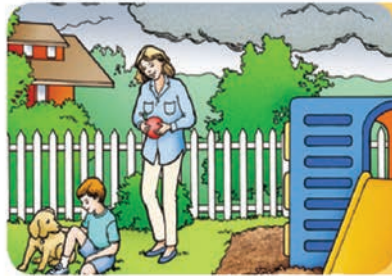
Outdoor Safety

- » If you can hear thunder, you are within striking distance of lightning. Look for shelter inside a home, large building, or a hard-topped vehicle right away.
- » Do not go under trees for shelter. There is no place outside that is safe during a thunderstorm.
- » Wait at least 30 minutes after hearing the last clap of thunder before leaving your shelter.
- » Stay away from windows and doors. Stay off porches.
- » There is no safe place outside. Places with only a roof on sports fields, golf courses, and picnic areas are not safe during a lightning storm. Small sheds should not be used.
- » If a person is struck by lightning, call 9-1-1. Get medical help right away.

Indoor Safety

Turn off computers. Stay off corded phones, computers, and other things that put you in direct contact with electricity or plumbing. You can use a cell or cordless phone.

Do not wash your hands, bathe, shower, do laundry, or wash dishes.



FAST FACTS

Lightning may strike as far as 10 miles from any rain.



Your Source for SAFETY Information
NFPA Public Education Division • 1 Batterymarch Park, Quincy, MA 02169

VACATION CHECK

Leaving for vacation? Remember, an accumulation of mail, newspapers or high grass puts burglars on alert that someone isn't home.

Don't forget these important safety precautions:

- ✓ Stop your mail or have a neighbor collect it.
- ✓ Have neighbors pick up newspapers.
- ✓ Lock the house, garage and sheds.
- ✓ If lights aren't on timers, you may want to leave a lamp or low-watt light on.
- ✓ Don't leave spare keys outdoors.
- ✓ Arrange for lawn care if you'll be gone for a week or longer.
- ✓ Request a Vacation House Check

Vacation House Checks are provided by Amity Township Police at no charge to our residents. Police will conduct periodic property inspections while you're away. When you're planning your next vacation, be sure to stop by the municipal building during normal business hours, Monday through Friday from 8:00am to 4:30pm. You can save some time by completing the form ahead of time. Print the form from our website at www.amitytownship.com under "About Us". Just print it, complete it, drop it off at the municipal building and enjoy your vacation with one less worry!

Spacious & Cozy Country Setting Townhome Rentals

Private Entrances



**Heritage
Amity Commons**



Heritage Amity Commons
Douglassville, Berks County



Heritage Orchard Hill
Perkasie, Bucks County



Heritage Summer Hill
Doylestown, Bucks County



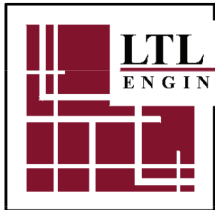
Heritage Greene
Sellersville, Bucks County



Heritage Pointe
Chalfont, Bucks County



Call Today to Schedule a Tour – 844.211.4604 • HeritagePropertyRentals.com



LTL CONSULTANTS, LTD.
ENGINEERS & CODE OFFICIALS

PO BOX 241
ONE TOWN CENTRE DRIVE
OLEY, PA 19547-0241

*Proudly Serving Amity Township as
Municipal Engineer Since 2002*

Phone: 610-987-9290

Amity Storage

"We Make Storage Easy"



Keypad Security • Moving Supplies

5x10 10x10 10x15 10x20 10x30

1100 Ben Franklin Hwy E.
Douglassville, PA 19518

610-385-1222
office@amitystorage.com



244 Old Philadelphia Pike
Douglassville, PA 19518
Phone: (610) 323-4471
www.whitegatecontracting.com
PAOAGHC#001214

MARK & CHRISTINE ELLIOTT
Owners & Operators
celliot@whitegatecontracting.com

A HONEY DIPPER SEPTIC SERVICE J. Brehm, Inc.

P.O. Box 427
Douglassville, PA 19518
www.ahoneydipperseptic.com

BIRDSBORO: 610-582-6888

POTTSTOWN: 610-327-1699



WE PUMP WHAT YOU DUMP



stevesmower@gmail.com
435 Magers Mill Rd.
Pottstown, PA 19464

Brands Sold & Serviced: Ariens . Gravely . Toro . Echo . RedMax . Masport . MTD
Engines Sold & Serviced: Kawasaki . Kohler . Briggs & Stratton . Honda

www.stevesmowershop.com

Est. 1953

Amity Township
2004 Weavertown Road
Douglassville, PA 19518

ECRWSS EDDM

Postal Customer

Presort Standard
U.S. Postage
PAID
Permit No. 550
Lehigh Valley, PA



Spring 2022
Volume XXI, Issue III

hometownpress

This Community Newsletter is produced for
Amity Township By **Hometown Press**
215.257.1500 • All rights reserved®



To Place An Ad Call Kathy At Hometown Press • 215-527-7664 • katruedy@gmail.com

Hyres

**Pest Control
Inc.**

Trust Our Experience to Manage Your Pests

RESIDENTIAL SERVICES | COMMERCIAL SERVICES
TERMITE CONTROL | BED BUG INSPECTION



PHONE: 610-385-6948 EMAIL: bug4hyres@aol.com

HARNER'S
AUTO BODY

524 Ben Franklin Hwy E • Birdsboro, PA 19508

Monday - Friday: 8am to 5pm
Saturday by appointment only

610-385-3825

**WEATHER THROUGH
APRIL SHOWERS**

CROSSCLIMATE®2



Cj's Tire
& AUTOMOTIVE

17 Convenient Locations Including Birdsboro:
91 Ben Franklin Hwy W | 610.582.4266

[Shop cjtire.com](http://Shop.cjtire.com)

Hear What You've Been Missing



SALES • SERVICE • REPAIRS

Kevin E. Rowley - Owner
610-781-9001



Advanced Hearing Aid Center

www.advancedhearingaidcenterpa.com

EXETER • BOYERTOWN • TOPTON • KUTZTOWN

FREE

Hearing Exam
ADVANCED HEARING AID CENTER
610-781-9001

With this coupon. Not valid with other offers
or prior services. Exp. 6/30/22

\$250 OFF

Any Digital Hearing Aid
ADVANCED HEARING AID CENTER
610-781-9001

With this coupon. Not valid with other offers
or prior services. Exp. 6/30/22