



June 2024 - Digital Newsletter



KEEP GRASS CLIPPINGS OFF OF THE STREETS!



Clippings act as a natural mulch which helps CONSERVE SOIL MOISTURE preventing your lawn from drought stress!



Keeping grass clippings in your lawn recycles nutrients your lawn needs to stay HEALTHY!

If you sweep your clippings into the street grass clippings can cause...



BACTERIA GROWTH in receiving water bodies



PENALTIES. It is **ILLEGAL** to litter in the streets: grass clippings included



FLOODING
A storm water system clog which may lead to **FLOODING**



SAFETY HAZARDS for motorists



PESTICIDES AND CHEMICALS to runoff into storm water drains, causing more filtration needs.



Yard waste containers at the rear of the Township building are for yard waste coming from bushes, trees, and leaves. Items should be piled next to the containers for our staff to pick up and place inside the containers.

The following materials CAN NOT be recycled and are NOT accepted:

- grass of any kind
- wooden decking
- fencing
- pressure treated wood
- tires of any kind

Anyone leaving non-recyclables will be caught, made responsible to remove those items and could be fined.



June 30th is the last day for the Flat Rate Period for Real Estate Taxes.

Payments can be made Monday through Friday, 8am until 4:30pm at the Township building or online through the link on the Township website.

Mailed payments must be post marked by June 30, 2024, or before to qualify for the Flat Rate.



- Need to update your mailing address or name on your sewer account?
- Want to know what your sewer balance is?
- Do you need a copy of your bill or account history?
- Need to make a one-time payment?
- Need to update your credit card or auto-pay?

We are here to help.
Call 610-953-0046.

Xpress Bill Pay is also available to update payment methods and auto-pay at 385-218-0343.



Selling a house in Amity Township?

Ensure you have an I&I re-sale inspection completed prior to the sale of your home if you have **public sewer**.

1. Go to our website www.amitytownshippa.com and look for the article on the front page referencing Sanitary Sewer Lateral Inspection.
2. Before completing the application, you will need to contact a plumber who can televise and record.
3. Once you have a plumber, then complete the I&I re-sale inspection application.
4. You must then coordinate with your plumber and the Township inspector to complete the inspection prior to settlement.

The Township cannot make recommendations on which plumber to use.



Safety Net Sanctuary



We could use your help!

Safety Net Sanctuary is a 501c3 Non-Profit Organization based in Fleetwood, Pennsylvania. We are contracted with 30 municipalities in Berks county for animal control for stray animals. We are a local pet rescue and shelter located on a 12- acre farm providing care for senior and special needs animals since 2014. We work hard to provide the best care and future for the animals entrusted in our care. Over the past years, hundreds of families have come to us to adopt pets. By adopting your pet from Safety Net Sanctuary you are helping to save even more animals in the future by making room for us to help those most in need.

Please consider donating and we thank you for your generosity.



Amazon Wishlist:



Chewy Wishlist:



Please see our available pets:

Petfinder:



Facebook:



Safety Net Sanctuary | 187 Houck Rd |
Fleetwood PA 19522 | 610-944-8099 |
allaboutus0909@gmail.com



Amazon Wishlist

Chewy Wishlist

All proceeds benefit PA Pitstop
a local Non-Profit rescue



4th Annual Paw Fest Block Party

LIVE Music
by
HAMBONE

June 2nd 12-5PM
at Reading Liederkrantz

143 Spook Lane, Reading PA 19606

\$15 for tickets : <https://2024pawfest.eventbrite.com>

Family Fun
Kids 12 and under free

Moonbounce

Carnival Games

Raffles

Great Food and Beverages

Vendors & More!

This is an OUTDOOR event! Well behaved dogs are welcomed, must be leashed and under control. Rain or Shine!

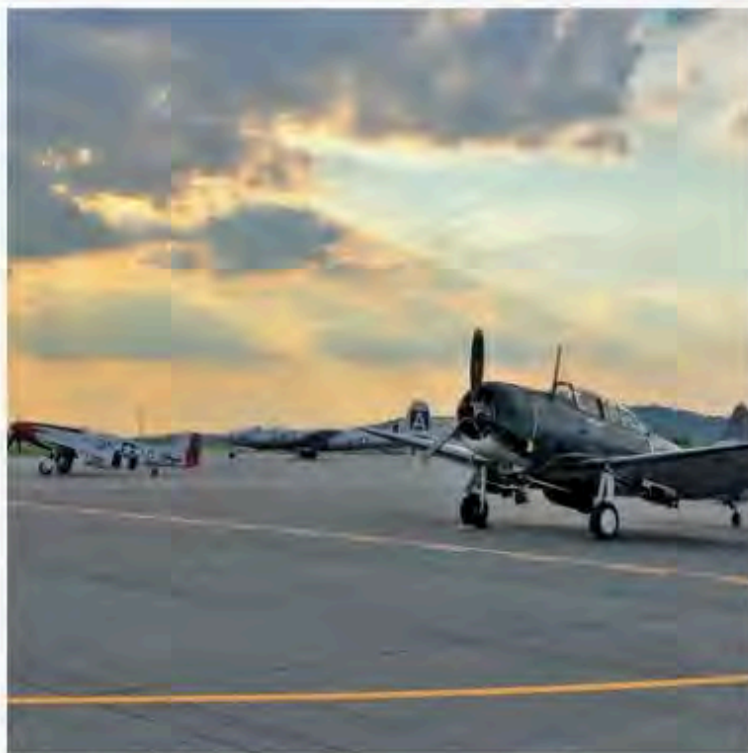
Mid-Atlantic Air Museum's WWII Weekend

The Mid-Atlantic Air Museum's World War II Weekend: A Gathering of Warbirds has become the premier event of its kind. For over three decades, we honor our history through D-Day remembrance, vehicle & aircraft displays and shows, war Veterans & speakers, vendors & demonstrations, battles & flights education, the Homefront education, re-enactors: at war and at home, and big bands & swing dancing.

This year marks the 33rd Annual Event and will be held June 7th, 8th, and 9th 2024!

Parking:

*1216 Hilltop Road, Leesport, Pennsylvania 19533, United States
Event Gate Admission starts at 8:30AM*



BIRDSBORO STREET FAIR AND DUCK DERBY

JUNE 8, 2024 MAIN BIRD PARK

9AM - 4PM MAIN ST & WATER ST. BIRDSBORO, PA

FOOD
CRAFTS
ENTERTAINMENT
CHILDREN'S ACTIVITIES

HUNDREDS OF DUCKS
WILL RACE DOWN THE
CREEK AT 3:30PM!

DUCK TICKETS \$5 EACH

OR \$20 FOR A QUACK PACK (5 TICKETS)



TICKETS AVAILABLE AT:
BOONE AREA LIBRARY AND IN THE PARK THE DAY OF THE RACE
Must be at least 18 years of age to purchase tickets.

For information email circulation@boonelibrary.org
ALL PROCEEDS BENEFIT THE BOONE AREA LIBRARY

Identity Theft Prevention Event

FREE
EVENT IS RAIN OR SHINE

Hosted by **SENATOR TRACY PENNYCUICK**

SATURDAY, JUNE 8
9:00 AM - 12:00 PM

BOYERTOWN AREA MULTI SERVICE
200 WEST SPRING STREET, BOYERTOWN, PA, 19512

THIS IS A DRIVE THROUGH EVENT

- Identity theft prevention information will be provided.
- An **INDUSTRIAL SHREDDER TRUCK** will be on site.
- 3 boxes or bags - No Plastic Bags Permitted.

PHONEBOOKS, NEWSPAPERS AND BOUND BOOKS CANNOT BE ACCEPTED. PLEASE REMOVE ANY BINDER OR PAPER CLIPS.

THIS EVENT IS FOR INDIVIDUALS ONLY...
NO BUSINESSES PLEASE.

PRESTON'S PANTRY VOLUNTEERS WILL BE ON HAND TO COLLECT FOOD DONATIONS.



For more information, please call the Red Hill office at 215-541-2388.

Facebook.com/SenatorPennycuick @Sen_Pennycuick
senatorpennycuick Tracy Pennycuick

SenatorPennycuick.com



SENATOR
TRACY PENNYCUICK



Kite Day - Sunday, June 9, 2024, from 12PM - 4PM
Daniel Boone Homestead
400 Daniel Boone Rd Birdsboro, PA 19508

June 10th marks Benjamin Franklin's kite flying experiment in 1752, where he tied a key to his kite and took it out during a thunderstorm to see if an electrical charge was produced.

Bring your kite and join us at Daniel Boone Homestead for Kite Day. We hope you'll bring your own kite to fly and join us to learn a little more about Ben Franklin and his experiments.



HAPPENING AT THE HILL THIS SPRING.....



WALK IN THE WOODS - SUNDAY, JUNE 9 - 1:30 PM

ALL WALKS START FROM THE GEIGER ROAD PARKING LOT AND ARE FREE AND OPEN TO THE PUBLIC. ALL CHILDREN YOUNGER THAN 18 YEARS OF AGE MUST BE ACCOMPANIED BY AN ADULT. HEAVY RAIN OR SNOW CANCELS EVENT. CHECK OUR FACEBOOK PAGE FOR CANCELLATIONS.



MONOCACY KIDS 2024 NATURE SERIES



This **Nature Series** is designed to encourage children's curiosity, engaging them in hands-on activities in the natural world through stories, games, crafts, scavenger hunts and other outdoor activities.

Series Schedule

ANIMALS Friday, JUNE 14 9:30 AM
INSECTS Monday, JULY 22 9:30 AM
NATIVE AMERICANS Monday, AUGUST 12 9:30 AM
CAMPING/SMOKEY Saturday, SEPTEMBER 14 1:00 PM
TREES Sunday, OCTOBER 13 1:00 PM



Programs are 2 hours and are Free to the public. Registration is limited to 12 children, ages 4 - 6. Children must be accompanied by an adult throughout the session. Email sswanson511@gmail.com to register.



**Star Watch at the Southern Field of the Daniel Boone Homestead
Saturday, June 15, 2024, at 8:35pm-11:35pm
400 Daniel Boone Rd Birdsboro, PA 19508**

Dress WARM, bring RED light, binoculars and enjoy the night with views through our telescopes!

Sunset 8:35 pm

Dark Views 9:35 pm

ISS (International Space Station) ~N/A

Observation List:

Luna (Earth's Moon) in 1st Quarter

Spring setting / Overhead (Leo, Boötes)

Summer rising ("Summer Triangle," Ophiuchus)

Star Clusters

Galaxies

Nebulae



**Let's Cook Charcuterie Class at Ridgewood Winery
2039 Philadelphia Ave, Birdsboro, PA 19508
Friday June 21, 2024, at 6pm**

Penn State Extension Berks Educators will teach a hands-on class where you will practice creating condiments from scratch and putting a delicious charcuterie board together.

Space is limited, and preregistration is required.

Sign Up Now!



Evening on the Green & Pop-Up Biergarten

SATURDAY, JUNE 29, 2024 • 4-8PM

🌟📺 We have some super exciting news to share! The Homestead is thrilled to announce the return of its summer evening event – Evening on the Green on June 29th from 4-8pm. This newly envisioned, after-hours event will feature:

🍺 Colonial Beer Brewing Demonstration by the Regimental Brewmeister

🍷 Beer, Wine, & Mead by [SLY FOX BEER](#), [Ridgewood Winery, LLC](#), & Stonekeep Meadery and Wine Cellars

🍴 Food from [Wow Wagon](#) & [Mister Softee Reading Pa](#)

🎵 Music by the Subterraneans & Days of Old

🔪 Activities & Tours in the Historic Area



When: Saturday, June 29, 2024, from 11AM-9PM

Location: 143 Spook Lane Reading, PA 19606

Come celebrate the Celtic heritage with food, drink, Irish entertainment, and various vendors.



June 29 - July 7, 2024

9am - 6pm Daily

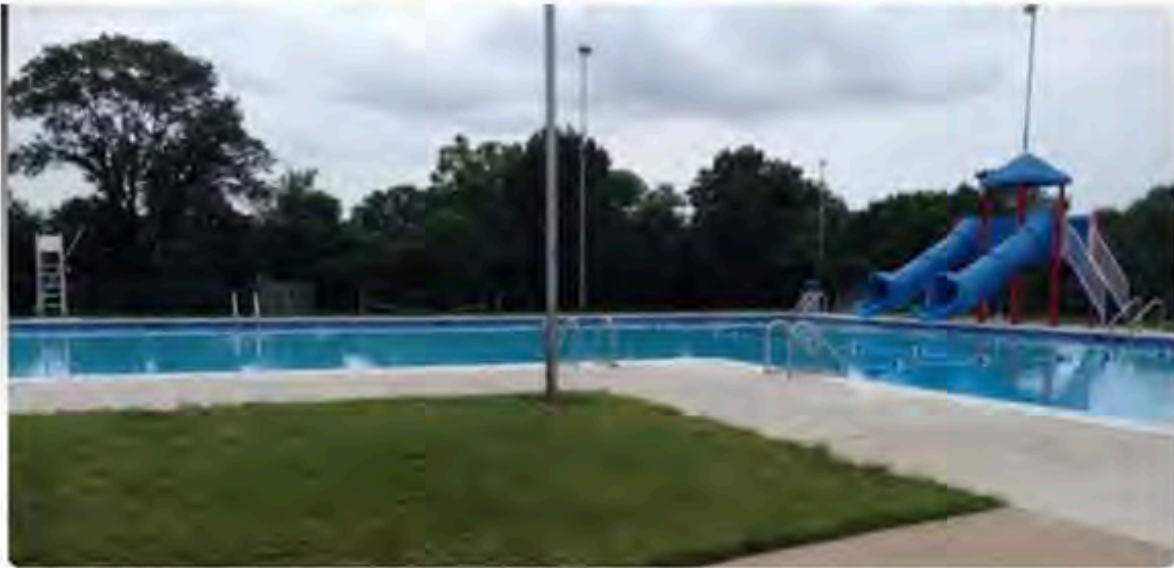
**Experience Our Nation's
Longest Continually
Running Folklife Festival**

Juried Craftsmen • Authentic Pennsylvania Dutch Foods
Live Entertainment • Unique Quilt Sale and Live Auction

KUTZTOWNFESTIVAL.COM



First Responder Night at Amity AC



**When: Friday, August 9, 2024, from 5:00PM – 9:30PM
(Rain date Saturday August 10th)**

Where: 55 Amity Park Rd, Birdsboro, PA 19508

\$10 per CAR donation to park.

Come enjoy the food trucks, fire trucks and live music from Stephanie Grace Band.

Enjoy Hot Air Balloons and tethered Hot Air Balloon rides for \$15 kids \$20 adults (weather depending)

The Pool will be open to public for swimming.

FIREWORKS AT 9:00 PM.



Saturday, October 19th

Rain Date - Sunday, October 20th



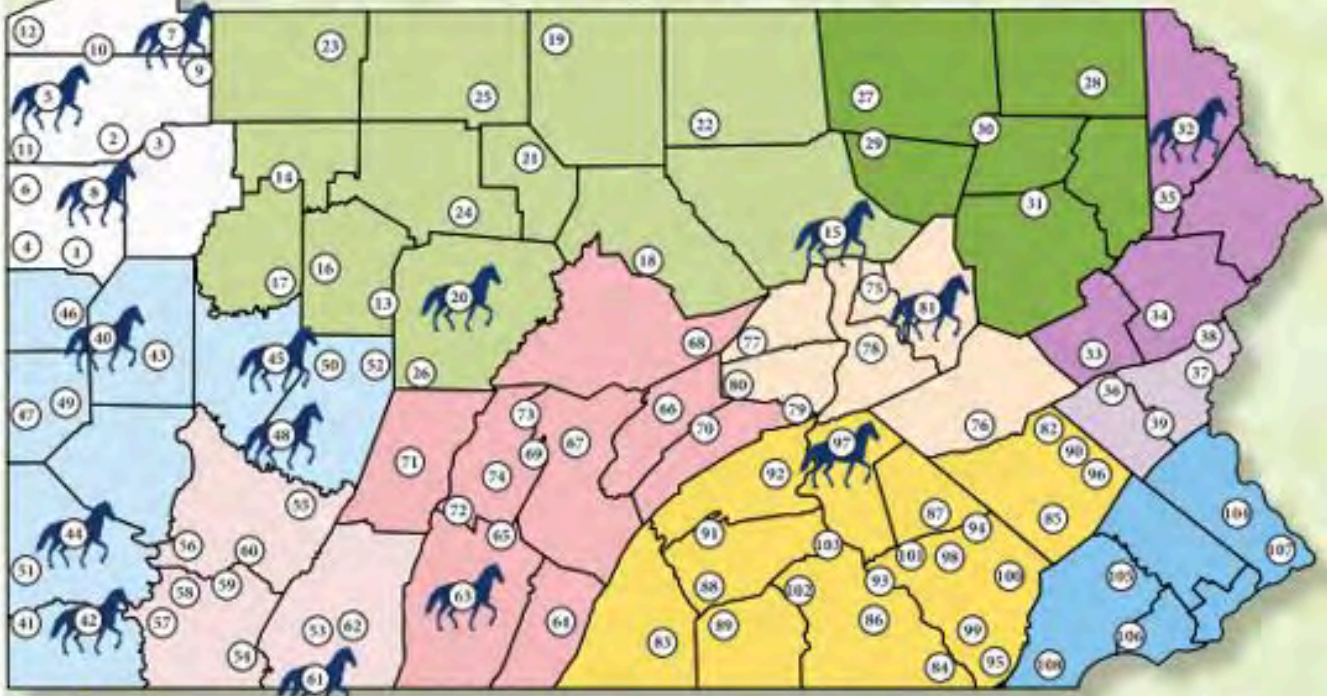


"From showcasing regional specialties and talents, to teaching visitors young and old about the importance of agriculture, Pennsylvania's 108 fairs are the hearts of their communities. There is something for every visitor at our fairs - food, animals, exhibits, and more fun. Whether you leave with a blue ribbon or a full stomach, you'll be glad you visited a PA fair this year"

Russell C. Redding, Secretary of Agriculture



USE THIS MAP TO PLAN YOUR FAIR ADVENTURE!



INDICATES FAIRS FEATURING HARNESS RACING

Great Lakes Region

1	Mercer County Grange Fair	June 25-29
2	Cochranon Community Fair	Aug 6-10
3	Venango County Fair	Aug 3-10
4	Jefferson Township Fair	Aug 6-10
5	Crawford County Fair	Aug 17-24
6	Transfer Harvest Home Fair	Aug 20-25
7	Erle County Fair at Wattsburg	Aug 26-31
8	The Great Stoneboro Fair	Aug 28-Sep 2
9	Spartansburg Community Fair	Sep 2-7
10	Waterford Community Fair	Sep 2-7
11	Jamestown Community Fair	Sep 3-7
12	Albion Area Fair	Sep 9-14

Pennsylvania Wilds

13	Sykesville Ag & Youth Fair	June 16-22
14	Wolf's Corners Fair	June 30-July 6
15	Lycoming County Fair	July 10-20
16	Jefferson County Fair	July 14-20
17	Clarion County Fair	July 21-27
18	Clinton County Fair	July 27-Aug 3
19	Potter County Fair	July 28-Aug 3
20	Clearfield County Fair	July 12-20
21	Cameron County Fair	Aug 4-10
22	Tioga County Fair	Aug 5-10
23	Warren County Fair	Aug 5-10
24	Elk County Fair	Aug 6-10
25	McKean County Fair	Aug 11-18
26	Harmony Grange Fair	Sep 17-21

Upstate Pennsylvania

27	Troy Fair	July 22-27
28	Harford Fair	Aug 12-17
29	Sullivan County Fair	Aug 28-Sep 1
30	Wyoming County Fair	Aug 28-Sep 2
31	Luzerne County Fair	Sep 4-8

Pocono Mountains

32	Wayne County Fair	Aug 2-10
33	Carbon County Fair	Aug 5-10
34	West End Fair	Aug 18-24
35	Greene-Dreher-Sterling Fair	Aug 23-Sep 1

Lehigh Valley

36	Schnecksville Community Fair	June 18-22
37	Plainfield Farmers Fair	July 23-27
38	Blue Valley Farm Show	Aug 13-17
39	Allentown Fair	Aug 28-Sep 2

Pittsburgh & Its Countryside

40	Big Butler Fair	June 28-July 6
41	Jacktown Fair	July 16-20
42	Greene County Fair	Aug 5-10
43	Butler Farm Show	Aug 5-10
44	Washington County Ag Fair	Aug 10-17
45	Dayton Fair	Aug 12-17
46	Lawrence County Fair	Aug 12-17
47	Hookstown Fair	Aug 20-24
48	Indiana County Fair	Aug 25-31
49	Big Knob Grange Fair	Aug 27-31
50	Ox Hill Community Fair	Sep 2-7
51	West Alexander Fair	Sep 2-7
52	Cookport Fair	Sep 9-14

Laurel Highlands

53	PA Maple Festival	April 20 & 21 April 24-28
54	Mountain Area Fair	June 22-29
55	Derry Township Ag Fair	July 14-20
56	Sewickley Twp Fair	July 15-20
57	Fayette County Fair	July 25 - Aug 3
58	Dawson Grange Fair	Aug 5-10
59	Bullskin Twp Fair	Aug 11-17
60	Westmoreland Fair	Aug 16-24
61	Somerset County Fair	Aug 17-26
62	Berlin Brothersvalley Fair	Sep 11-14

The Alleghenies

63	Bedford County Fair	July 21-27
64	Fulton County Fair	July 28-Aug 3
65	Morrisons Cove Dairy Show	July 28-Aug 2
66	Mifflin County Youth Fair	Aug 3-10
67	Huntingdon County Fair	Aug 4-10
68	Centre County Grange Fair	Aug 16-24
69	Williamsburg Community Farm Show	Aug 17-24
70	Juniata County Fair	Aug 31-Sep 7
71	American Legion County Fair	Sep 1-7
72	Claysburg Farm Show	Sep 3-7
73	Sinking Valley Fair	Sep 9-14
74	Hollidaysburg Fair	Sep 16-19

Valleys of the Susquehanna

75	Montour-Delong Fair	July 22-27
76	Schuylkill County Fair	July 29-Aug 3
77	Union County West End Fair	Aug 4-10
78	Northumberland County Fair	Aug 20-24
79	McClure Bean Soup Fair	Sep 9-14
80	Beaver Community Fair	Sep 15-21
81	Bloomsburg Fair	Sep 20-28

Dutch Country Roads

82	Kempton Fair	June 13-15
83	Franklin County Fair	July 7-13
84	Mason Dixon Fair	July 8-13
85	The Berks County Fair	July 10-13
86	York State Fair	July 19-28
87	Lebanon Area Fair	July 20-27
88	Shippensburg Community Fair	July 22-27
89	South Mountain Fair	July 23-27
90	Kutztown Fair	Aug 5-10
91	Cumberland Ag Expo	Aug 6-10
92	Perry County Community Fair	Aug 13-17
93	Elizabethtown Fair	Aug 19-24
94	Denver Fair	Sep 10-14
95	Southern Lancaster County Fair	Sep 18-20
96	Oley Valley Fair	Sep 19-21
97	Gratz Fair	Sep 15-21
98	Ephrata Fair	Sep 24-28
99	West Lampeter Fair	Sep 25-27
100	New Holland Farmers Fair	Oct 2-5
101	Manheim Farm Show	Oct 7-11
102	Dillsburg Farmers Fair	Oct 14-19
103	PA Farm Show	Jan 4-11, 2025

Philadelphia & Its Countryside

104	Delaware Val Univ. A Day	April 26-28
105	Kimberton Fair	July 22-27
106	Goshen Country Fair	July 19-27
107	Middletown Grange Fair	Aug 14-18
108	Unionville Fair	Oct 4-6



JUNE is *National* **PTSD AWARENESS** MONTH

Raising Awareness This PTSD Awareness Month

Post-Traumatic Stress Disorder (PTSD) is a psychiatric disorder that occurs in response to experiencing, or witnessing, a traumatic event.

Possible Causes of PTSD



Assault
or abuse



Sudden death
of a loved one



Childhood or
adulthood trauma



Military service



Accidents
and injuries

Common Signs and Symptoms of PTSD

The signs and symptoms of PTSD usually present within three months of a traumatic incident, though they may take up to one year to develop.² These may include flashbacks and recurrent thoughts of the trauma; ongoing fear, irritability, aggression, and/or sadness; avoidance of people, places, or feelings related to the trauma; trouble sleeping; and guilt or shame.

Seeking Help

If you or a loved one are in need of treatment for PTSD, know that help is always available.

To support friends or family members with PTSD, work with them to seek professional care, go with them to appointments, and educate yourself on PTSD and their experience in order to help them avoid triggers. If you are experiencing PTSD yourself, we encourage you to pursue treatment with a qualified therapist or other medical professional.



**Veterans
Crisis Line**

DIAL 988 then PRESS 1



We hope everyone enjoys a safe and happy holiday! Please be considerate of neighbors as you celebrate our independence. Let neighbors who have dogs know if you'll be using consumer fireworks.

Consumer Fireworks include sparklers, cylindrical fountains, cone fountains, illuminating torches, wheels, ground spinners, flitter sparklers, toy smoke devices, wire sparkler/dipped sticks, and aerial devices such as sky rockets, bottle rockets, missile-type rockets, helicopter aerial spinners, aerial shell kits, roman candles, and mine and shell devices (not exceeding 500 grams).

Regulations of using consumer fireworks are as follows:

- A person who is at least 18 years of age may purchase, possess, and use consumer fireworks.
- A person may not intentionally ignite or discharge Consumer fireworks:
 - o on public or private property without the express permission of the owner.
 - o within, or throw consumer fireworks or sparkling devices from, a motor vehicle or building.
 - o into or at a motor vehicle or building or at another person.
 - o while the person is under the influence of alcohol, a controlled substance or another drug.
 - o within 150 feet of an occupied structure

How late can you legally set off consumer fireworks? Act 74 of 2022 permits the use of consumer fireworks until 1:00AM on the holiday, and, when the holiday falls on a Tuesday, Wednesday, or Thursday like it does this year, the Act permits use of consumer fireworks until 1:00AM on the preceding and following Friday and Saturday.

Fireworks Safety

Have a blast while staying safe this Independence Day!

Body parts most commonly injured by fireworks :



There are **2X** as many fires reported on July 4th than any other day of the year

Sparklers can burn up to **2,000 °F** making it one of the most dangerous fireworks

Safety Tips

Adults should always supervise



Keep your pets inside

Keep a bucket of water close



Move back a safe distance after lighting a firework

Never have any part of your body over the firework when lighting it



Never relight a firework

OUTDOOR GRILLING

Hand Safety Tips

1

USE GLOVES

When turning food or removing items from the grill, always use potholders or insulated gloves to protect your hands from the heat. The flame could flare up without notice. Gloves will also protect your hands from skewers.

2

LONG UTENSILS

Use long utensils that are meant for grilling when placing food on the grill, turning it or removing it. Do not let your hand get too close to the flame.

3

AVOID WINDS

Do not grill while there are high winds. The winds can cause the flame to jump which may burn your hands or start clothing on fire.

4

KEEP YOUR DISTANCE

When measuring the temperature of the grill with your hand, keep your hand at a safe distance from the grates. Start by feeling the heat from a far distance and slowly bring your hand closer to the grill.

5

NO MATCHES

When lighting a grill, always use a long-handled lighter rather than matches. This will protect your hands from the flame. With charcoal, don't use too much lighter fluid.

Types of Burns

Visit a hand surgeon or the nearest emergency room if you think you have a second, third or fourth degree burn.

1st Degree | Red skin without blisters

Treat with ice and pain relievers.

2nd Degree | Red skin with blisters

Treatment can include trimming of blisters, a hand splint and antibiotics.

3rd Degree | White, leathery skin

Treated with surgery and a hand splint.

4th Degree | White, leathery skin with damage to joints, tendons or bone

Treated with surgery (or multiple surgeries) and rehabilitation.



What are ticks?

Ticks are arthropods, with eight legs, like a spider. The only food source of ticks is blood. Ticks cannot fly or jump; they crawl.

Signs & symptoms of tickborne diseases

Most tickborne diseases begin with flu-like symptoms: fever, chills, headache, muscle, and joint aches. However, most tickborne diseases occur in the summer when the flu does not circulate. If you have flu-like symptoms, especially without respiratory symptoms, seek medical care as soon as possible.

People with Lyme disease usually, but not always, have a rash at the site of the tick bite. It may look like a bull's eye, but it may just be round or oval. It may appear red, purple, or blue on fair skin; on darker skin tones it may appear brown, black or white.

Later tickborne disease symptoms may include blood irregularities like anemia, thrombocytopenia, liver test abnormalities, and leukopenia. All bacterial and parasitic tickborne diseases are treatable. Viruses are treated with supportive care.

Ticks in Pennsylvania

DEER TICKS

Deer ticks are the most common ticks in Pennsylvania. These are the ticks that can transmit the bacteria that causes Lyme disease, anaplasmosis and *Borrelia miyamotoi* disease. They can also transmit the parasite that causes babesiosis, and Powassan virus.



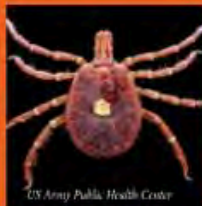
The life cycle of deer ticks (Ixodes ricinus) adult female



US Army Public Health Center

DOG TICKS

Dog ticks are the second most common tick in Pennsylvania. Dog ticks can transmit the bacteria that causes Rocky Mountain spotted fever.



US Army Public Health Center

LONE STAR TICKS

Lone star ticks are becoming more common in Pennsylvania. These ticks can transmit the bacteria that causes ehrlichiosis and viruses like Heartland virus and Bourbon virus, and may cause alpha gal allergy or meat allergy.



TIPS FOR TICK SAFETY

HOW TO PREVENT



USE INSECT REPELLENT



WEAR WHITE CLOTHES



AVOID AREAS WITH HIGH GRASS



WEAR LONG-SLEEVE SHIRT



WEAR LONG PANTS



WEAR HIGH SOCKS

AFTER YOU COME INDOORS CHECK YOUR BODY



CHECK CLOTHES FOR TICK



EXAMINE GEAR AND PETS



TAKE SHOWER

HOW TO REMOVE TICK

HOW TO REMOVE TICK



SANITIZE BITE AREA AND TWEEZERS



GRAB TICK CLOSE TO HEAD



PULL UP SLOWLY AND CAREFULLY



SANITIZE BITE AREA AGAIN

WHEN TO CALL A DOCTOR



FEVER



HEADACHE



RASH



YOU AREN'T ABLE TO REMOVE TICK



Vacation House Checks

Amity Township Police Department will conduct house checks while you are away on vacation if you would like. Complete the form on our website or use the link below.

[Vacation House Check Form](#)

YOU'RE INVITED TO A PAID STUDY ON WELL WATER AND CHILDREN'S HEALTH

- ✓ Are you interested in a free whole home UV water treatment device? (estimated value of device + installation: ~\$1,000)
- ✓ Would you like to receive gift cards (up to \$90) and a chance to win a family trip to Hershey Park (\$2,000 value) for your participation?
- ✓ Does your family drink water from a private well?
- ✓ Do you have a child who is 3 years old or younger?
- ✓ Not eligible yourself? Ask us about our referral rewards program.



Temple University researchers are recruiting families for a study lasting one year. The goal of this study is to understand if drinking well water can cause illness in children that can include symptoms of diarrhea, cough or fever. We want to know if treating well water can prevent these illnesses.

Now enrolling in select Pennsylvania counties!

For more information:


- Visit www.wettrial.org
- Call us at 215-204-5124, or
- Email us at wettrial@temple.edu



 **Temple University**
College of Public Health

 **wham LAB**

Amity Fire Company is excited to offer reflective address markers to our residents to allow first responders the ability to easily find your address in the event of an emergency. Signs cost \$15 dollars and will be dropped right off at your door. The downloadable order form can be accessed below! Reminder, these help us help you!

AMITY FIRE COMPANY	
REFLECTIVE ADDRESS MARKER ORDER FORM	
Please complete the following information:	
Name _____ Address _____ City, ST Zip _____ Phone Number _____	
Address Number Requested	
<input type="checkbox"/> <input type="checkbox"/> <input type="checkbox"/> <input type="checkbox"/> <input type="checkbox"/>	
<small>Note: If your address has fewer than 5 digits, please X those boxes not used.</small>	
Mounting Preference	
HORIZONTAL _____ VERTICAL _____ <small>Circle of you want Single or Double sided</small>	V E R T I C A L
HORIZONTAL	
<small>If you are attaching to your house you must select horizontal. (These signs will only be SINGLE sided)</small>	 ONLY! \$15
Mail to: <small>Make Checks Payable to: AMITY FIRE CO. Mail to: Amity Fire Co. PO Box 383 Douglassville Pa, 19518</small>	
For Faster Service, Please Call	

Click Here to Order!



PUBLIC ALERT & NOTIFICATION SYSTEM

ALERTS DELIVERED TO YOUR PAGER, CELL PHONE AND E-MAIL FOR
**PUBLIC SAFETY EMERGENCIES | ROAD CLOSURES
SEVERE WEATHER EVENTS**

When situations arise in Berks County that may affect you and your family, Berks Alert lets local officials notify you quickly. Be among the first to find out and stay informed during an emergency.

During serious emergencies, public safety officials will release information by using the BERKS ALERT program. The message will then be delivered to the devices that are registered in the system. While the most important messaging, such as that related to disaster response actions, will be sent to any device registered, individuals participating in the system may also "opt-in" to certain other categories about which they desire notifications. These categories include severe weather watches, amber alerts, road closures, and general community news.

When an individual registers for this service, they will be prompted to enter their home address and the address of other locations of interest (such as a child's day care center, school, or a place of business). Alerts that are appropriate to these locations of interest will then be sent to the subscriber's registered device(s).

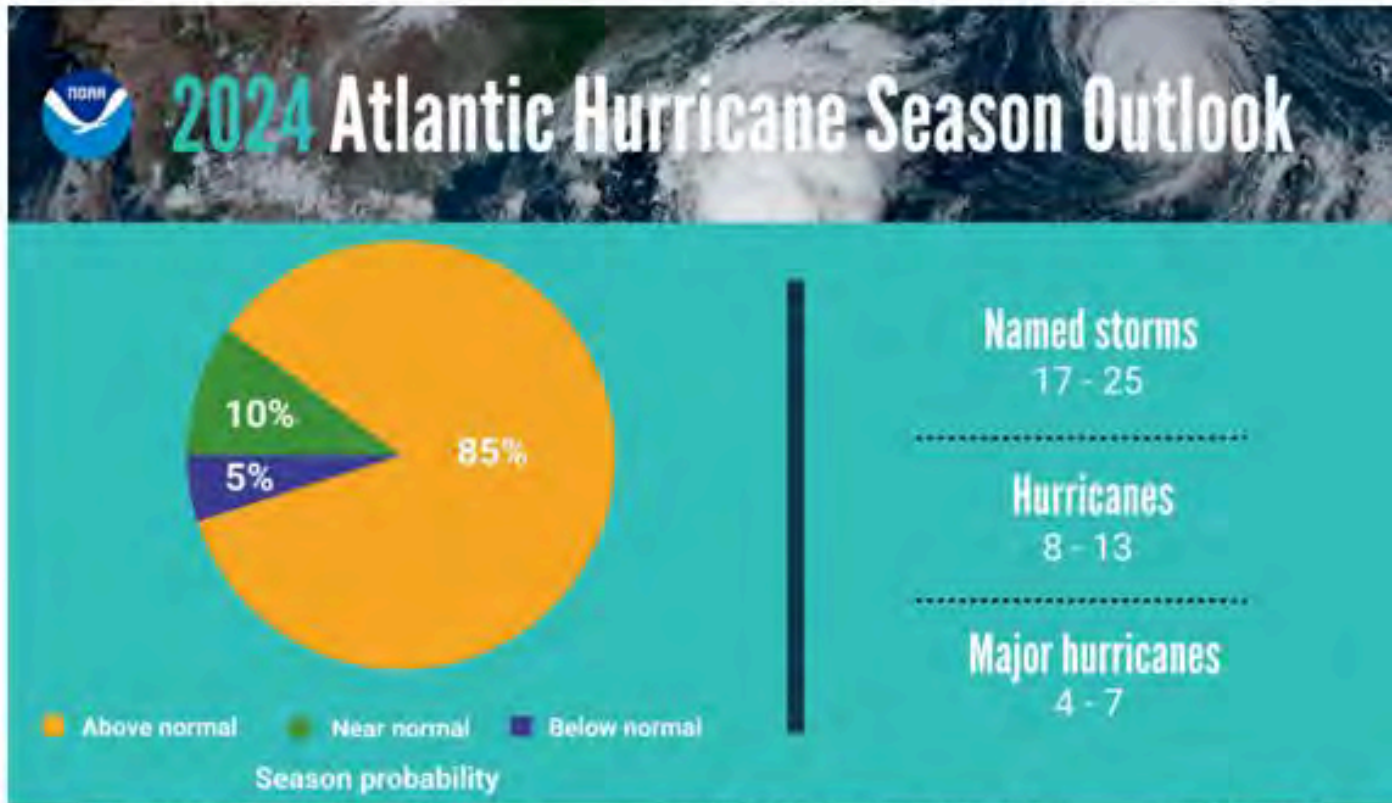
Get local alerts about emergencies, severe weather, and road closures on your cell or email. When situations arise in Berks County that may affect you and your family, Berks Alert lets local officials notify you quickly.

To register: Go to berksdes.com, select register now, and follow the subscriber registration instructions provided for you on the Berks Alert page.

- Should you have any questions or need assistance registering, please contact the Berks Alert team at berksalert@countyofberks.com or by calling 610-374-4800.

2024 Atlantic Hurricane Season

NOAA National Weather Service forecasters at the Climate Prediction Center predict above-normal hurricane activity in the Atlantic basin this year. The Atlantic Hurricane season spans from June 1 to November 30.





HURRICANE PREPAREDNESS TIPS

NEMA encourages you take these steps to prepare yourself, your loved ones, and your car from dangerous weather.

Review your emergency plan

Review your plan with everyone in your household and make sure everyone knows about the safest location in the home.



Check your supplies

Be sure to you have necessities such as water, blankets, first aid kits, flashlights, batteries, radios and any pet care items.



Set up an out-of-town contact

It's important to have an out-of-state friend or family member as a contact, so they can check on your whereabouts.



Secure important documents

Make sure documents such as insurance cards, IDs and other pertinent information are placed in a secured water-proof container.



Figure out your evacuation route

Make sure you know your evacuation route before the storm hits and keep a full tank of gas.



Be aware of your vehicle's surroundings

Make sure your vehicle is safe. If possible, move your vehicle away from trees or other objects that may damage it in a storm.



Follow official instructions

Follow all instructions from your local authorities regarding evacuation or other safety procedures. Check radio, television or other media for emergency information.





Thursday, June 13th at 7:00PM - Planning Commission

Tuesday, June 18th at 7:00PM - Parks and Recreation

Wednesday, June 19th at 7:00PM - Board of Supervisors

Meetings are held at the Township building, 2004 Weavertown Road.

The office will be closed Wednesday, June 19th for Juneteenth.

Amity Township Board of Supervisors

Kim McGrath, Chairperson / Dave Hackett, Vice Chair

Paul "Skip" Weller, Terry Jones, and Kevin Keifrider



Copyright (C) 2024 Amity Township. All rights reserved.

Our mailing address is:
Amity Township
2004 Weavertown Rd
Douglassville, PA 19518