


Amity Township, Berks County, Pennsylvania
Residential Grinder Pump Maintenance Policy

All residential sanitary sewage grinder pumps installed in Amity Township will be owned and maintained by the individual property owners. The low pressure sewer mains over 2" in diameter will be installed by the developer or property owner and dedicated to the Township. The Township will maintain the low pressure sewer main lines only.

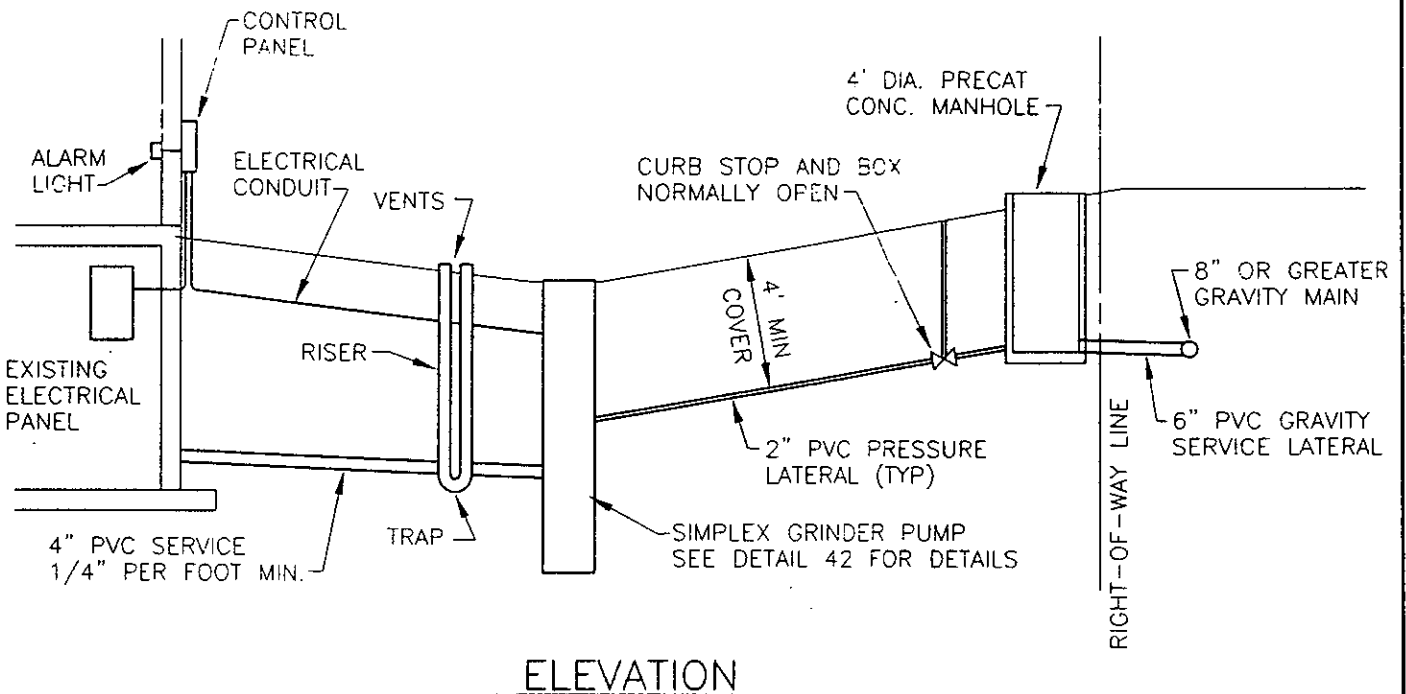
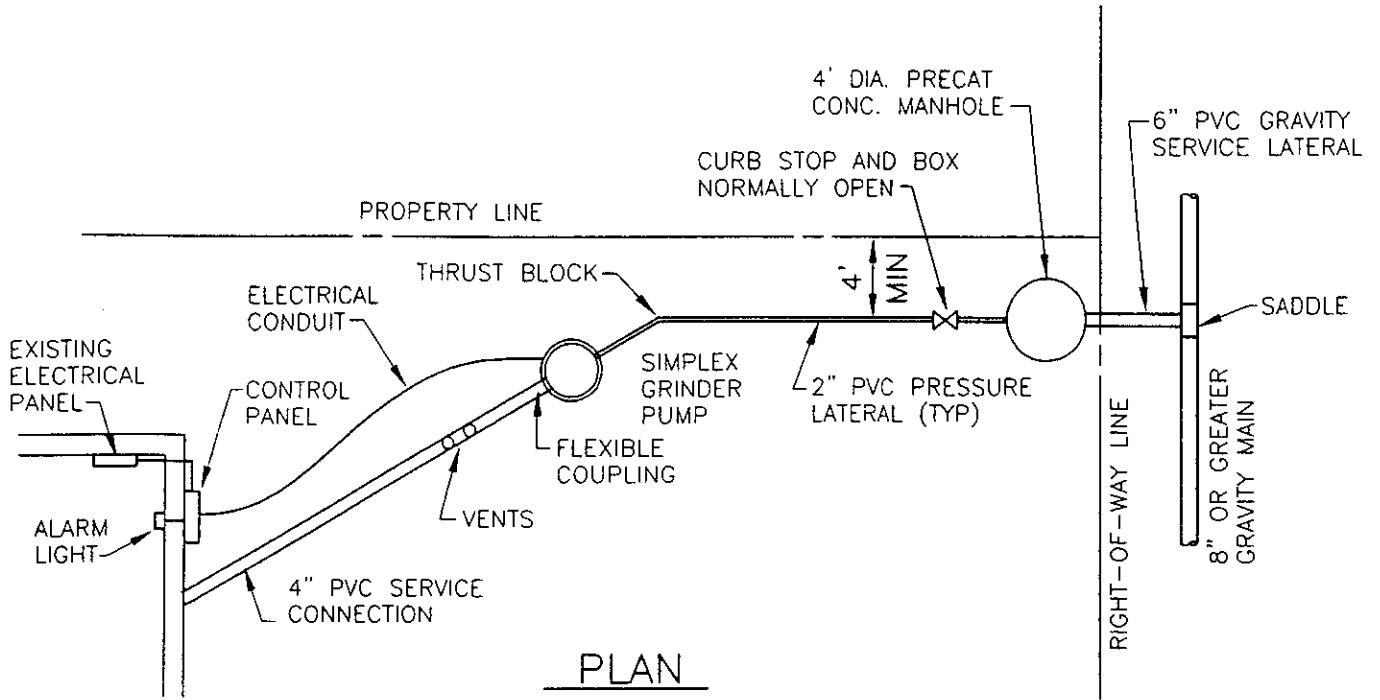
Amity Township will accept responsibility for enforcement of the Sewer Use Ordinance and will require that any individual homeowner repair or replace a malfunctioning residential or commercial grinder pump system that could cause a nuisance or public health hazard.

The type of grinder pump systems that are required are detailed in Section 17 of the Amity Township Standard Specifications and Details for Sanitary Sewer Extensions and Repairs, a copy of which is attached.

Signed



Charles Lyon, Township Manager



AMITY TOWNSHIP

2004 WEAVERTOWN ROAD
DOUGLASVILLE, PA 19518

STANDARD DETAIL - SEWER SYSTEM

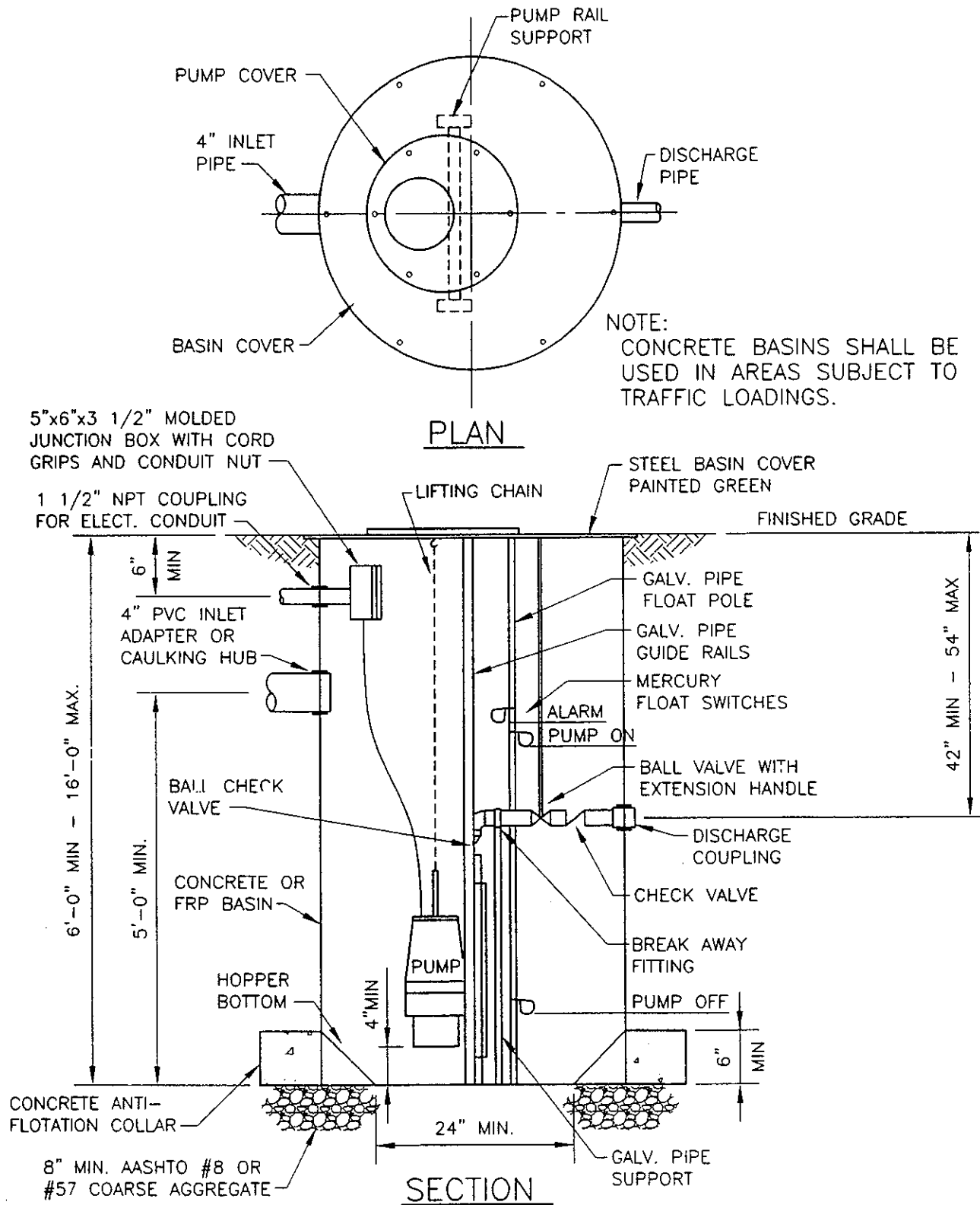


400 Washington Street, Suite 602
Reading, Pennsylvania 19601
Tel 610.374.5285

**PRESSURE LATERAL DETAIL
DISCHARGE TO GRAVITY MAIN**

DATE: JUNE 2005

DETAIL: 43



AMITY TOWNSHIP

2004 WEAVERTOWN ROAD
 DOUGLASVILLE, PA 19518

STANDARD DETAIL - SEWER SYSTEM

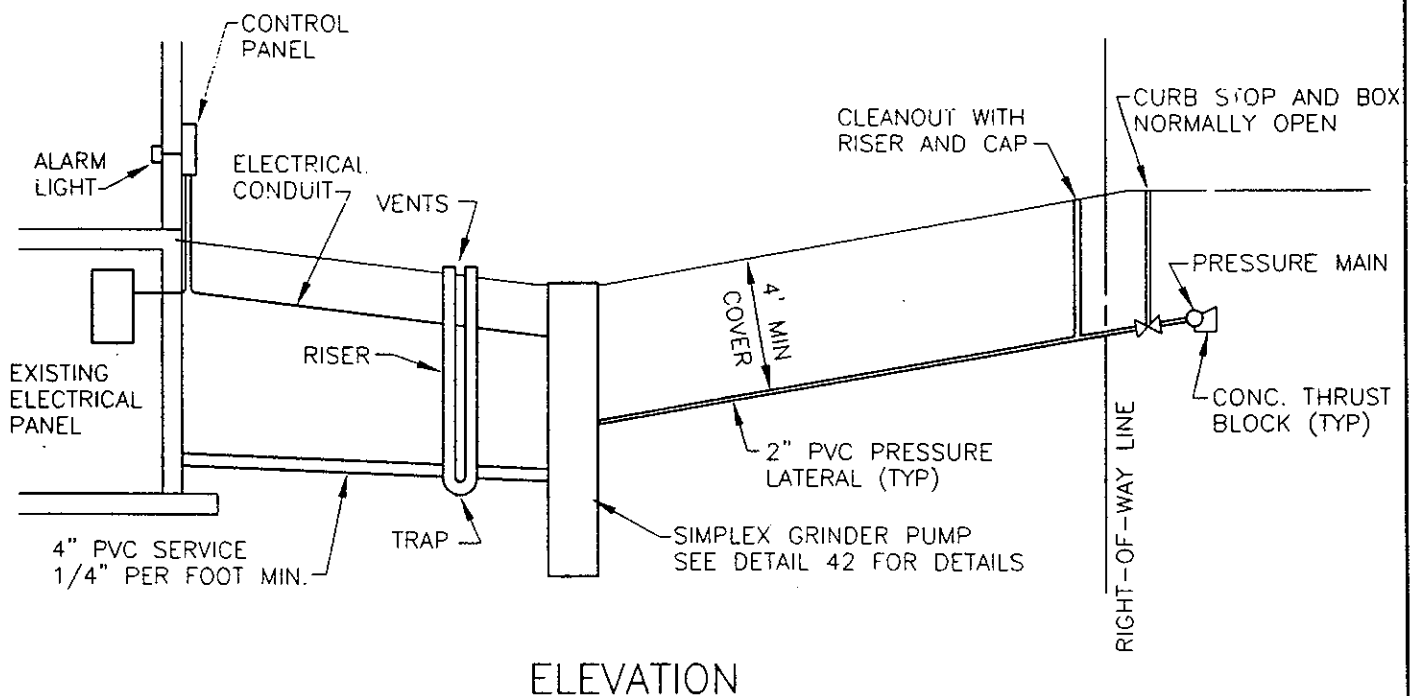
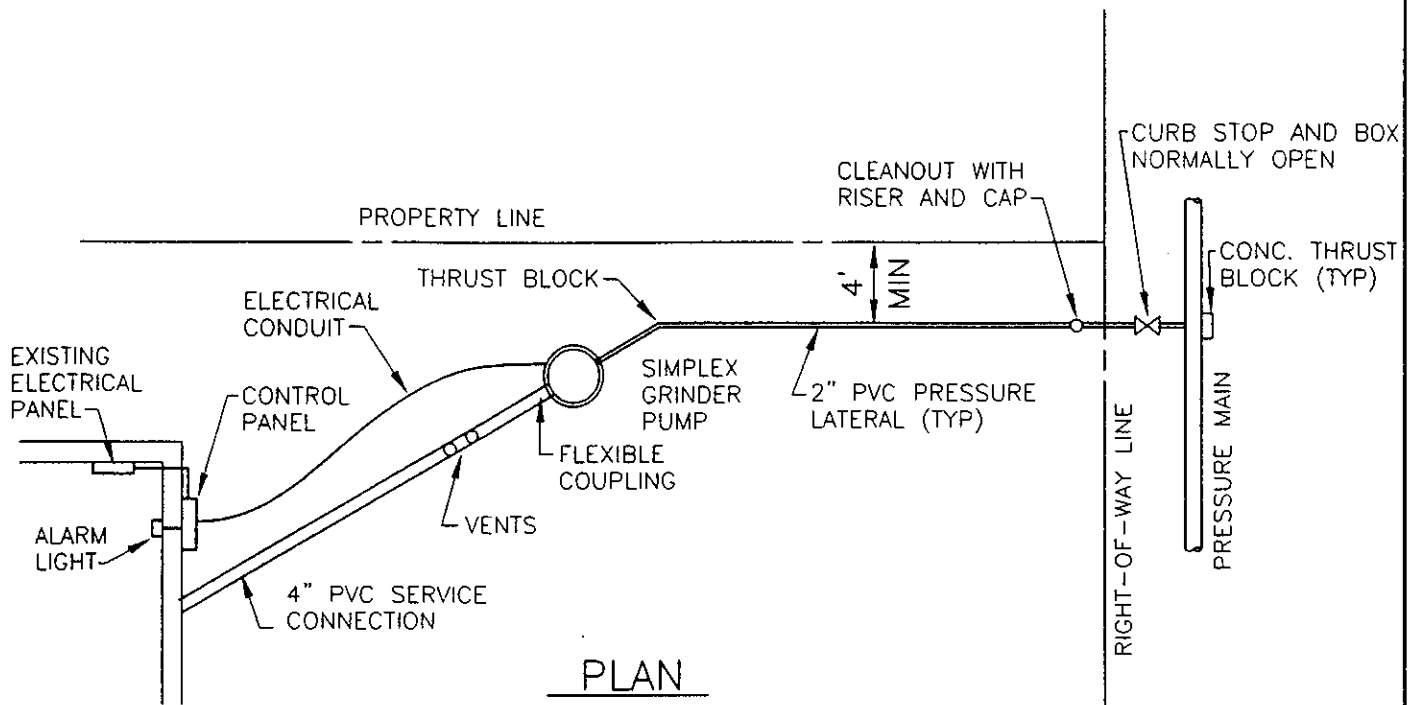


400 Washington Street, Suite 602
 Reading, Pennsylvania 19601
 Tel 610.374.5285

SIMPLEX GRINDER PUMP DETAIL

DATE: JUNE 2005

DETAIL: 42



AMITY TOWNSHIP

2004 WEAVERTOWN ROAD
DOUGLASVILLE, PA 19518

STANDARD DETAIL - SEWER SYSTEM



400 Washington Street, Suite 602
Reading, Pennsylvania 19601
Tel 610.374.5285

PRESSURE LATERAL DETAIL DISCHARGE TO PRESSURE MAIN

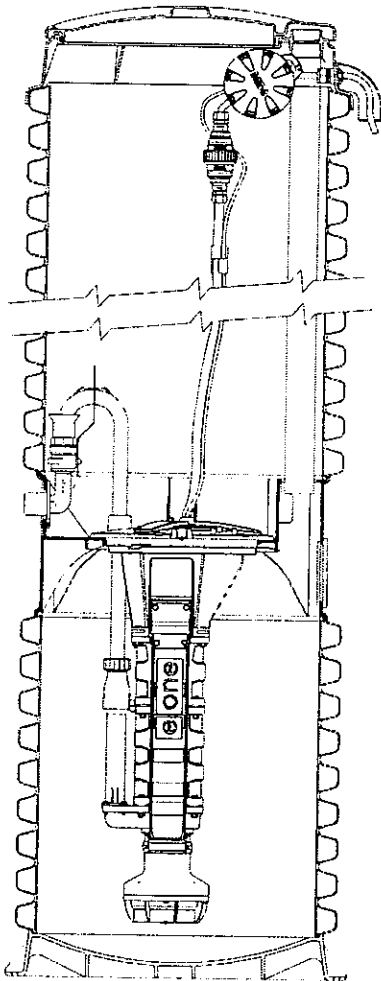
DATE: JUNE 2005

DETAIL: 44

E/ONE EXTREME

S E R I E S

DH071/DR071



General Features

The model DH071 or DR071 grinder pump station is a complete unit that includes: the grinder pump, check valve, HDPE (high density polyethylene) tank and controls. The DH071 or DR071 is packaged into a single complete unit, ready for installation.

The DH071 is the "hardwired," or "wired," model where a cable connects the motor controls to the level controls through watertight penetrations.

The DR071 is the "radio frequency identification" (RFID), or "wireless," model that uses wireless technology to communicate between the level controls and the motor controls.

All solids are ground into fine particles, allowing them to pass easily through the pump, check valve and small diameter pipelines. Even objects not normally found in sewage, such as plastic, rubber, fiber, wood, etc., are ground into fine particles.

The 1.25-inch discharge connection is adaptable to any piping materials, thereby allowing us to meet your local code requirements.

The tank is made of tough corrosion-resistant HDPE. The optimum tank capacity of 70 gallons is based on computer studies of water usage patterns. A single DH071 or DR071 is ideal for one, average single-family home and can also be used for up to two average single-family homes where codes allow and with consent of the factory. This model can accommodate flows of 700 GPD.

The internal check valve assembly, located in the grinder pump, is custom-designed for non-clog, trouble-free operation.

The grinder pump is automatically activated and runs infrequently for very short periods. The annual energy consumption is typically that of a 40-watt light bulb.

Units are available for indoor and outdoor installations. Outdoor units are designed to accommodate a wide range of burial depths.

Operational Information

Motor

1 hp, 1,725 rpm, high torque, capacitor start, thermally protected, 120/240V, 60 Hz, 1 phase

Inlet Connections

4-inch inlet grommet standard for DWV pipe. Other inlet configurations available from the factory.

Discharge Connections

Pump discharge terminates in 1.25-inch NPT female thread. Can easily be adapted to 1.25-inch PVC pipe or any other material required by local codes.

Discharge*

15 gpm at 0 psig

11 gpm at 40 psig

7.8 gpm at 80 psig

Overload Capacity

The maximum pressure that the pump can generate is limited by the motor characteristics. The motor generates a pressure well below the rating of the piping and appurtenances. The automatic reset feature does not require manual operation following overload.

Patent Numbers: 5,752,315
5,562,254 5,439,180

* Discharge data includes loss through check valve, which is minimal.

NA0050P01

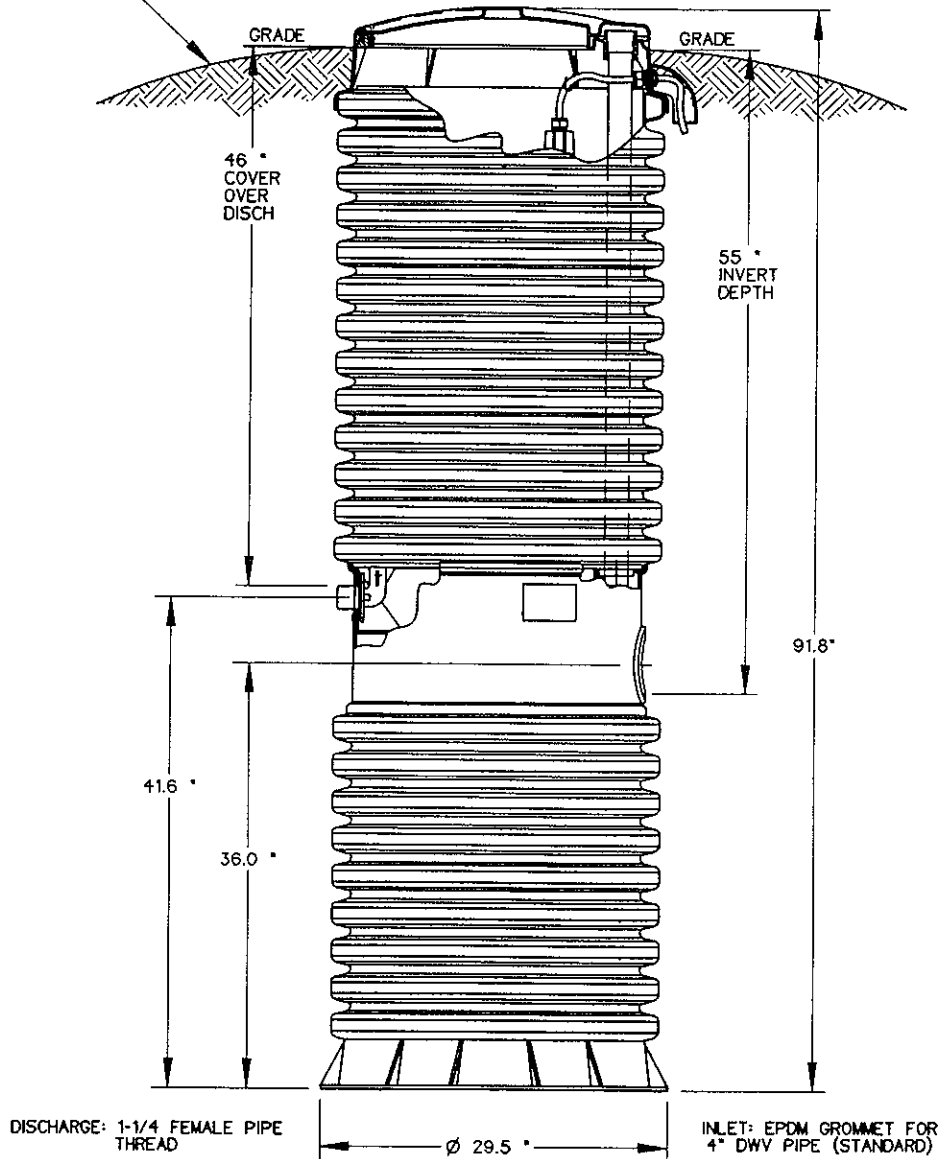
OPTIONS : **DH071-93**

(HARD WIRED
LEVEL CONTROLS)

DR071-93

(WIRELESS
LEVEL CONTROLS)

GRADE MUST SLOPE
AWAY FROM STATION



CONCRETE BALLAST MAY BE REQUIRED
SEE INSTALLATION INSTRUCTIONS
FOR DETAILS



AD	CAH	07/12/07	A	1/16
DR BY	CHK'D	DATE	ISSUE	SCALE



MODEL DH071-93 / DR071-93

NA0050P06

E/One Sentry™

Alarm Panel — Basic Package



Description

The E/One Sentry panels are custom designed for use with Environment One grinder pump stations. They can be configured to meet the needs of your application, from basic alarm indication to advanced warning of pending service requirements.

E/One Sentry panels are supplied with audible and visual high level alarms. They are easily installed in accordance with relevant national and local codes. Standard panels are approved by UL, CSA, CE and NSF to ensure high quality and safety.

The panel features a corrosion-proof, NEMA 4X-rated, thermoplastic enclosure. A padlock is provided to prevent unauthorized entry (safety front).

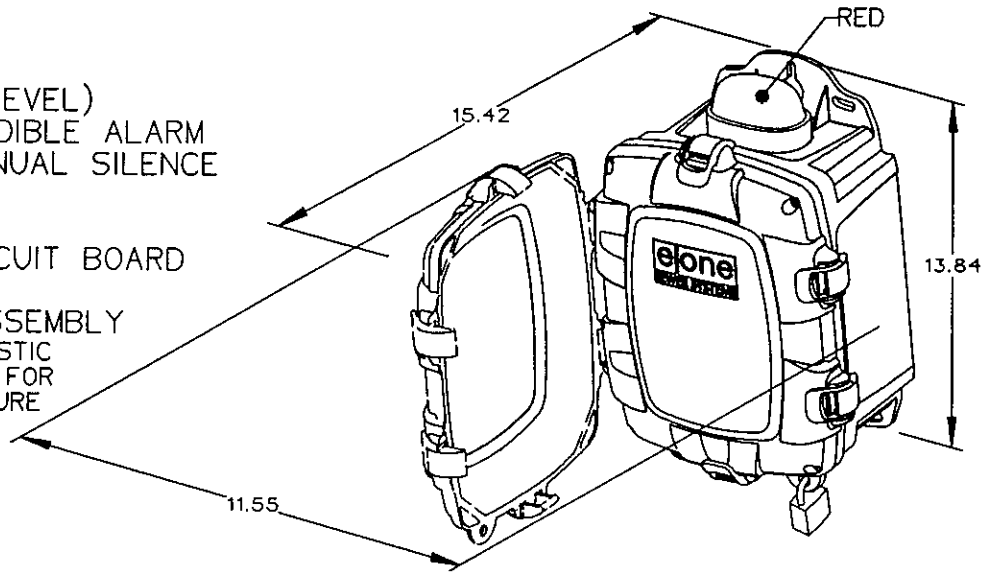
Features

- Circuit breakers, 240 or 120 VAC service
- Terminal blocks and ground lugs
- Audible alarm with manual silence
- Manual run feature and run indicator
- Redundant "Start" function with high level alarm
- Safety front — authorized personnel only when locked
- Conformal-coated alarm board (both sides)
- Alarm board overload protection

Please consult factory for special applications.

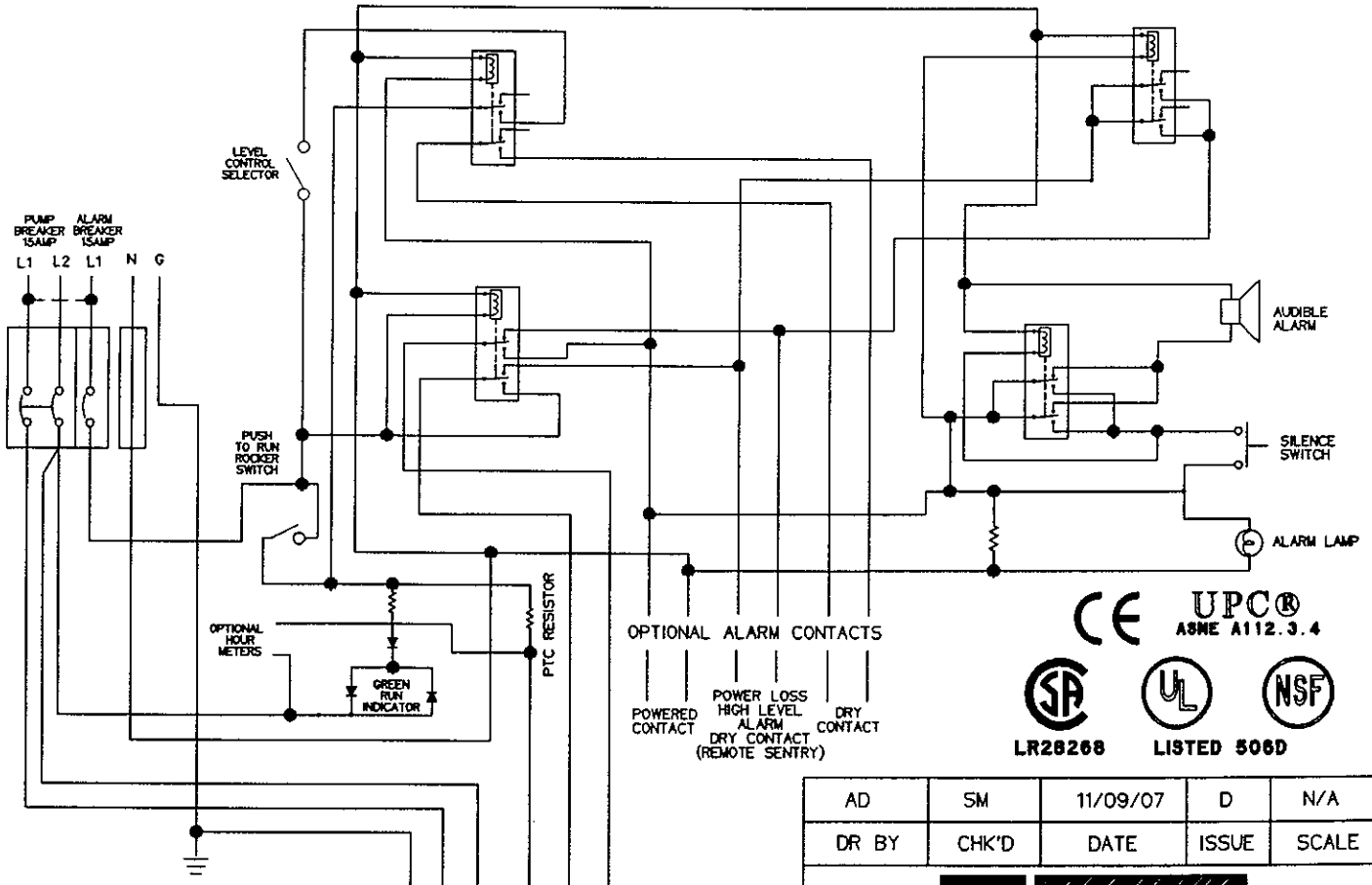
SIMPLEX SENTRY

REDUNDANT RUN (HIGH LEVEL)
 EXTERNAL VISUAL & AUDIBLE ALARM
 EXTERNAL LATCHING MANUAL SILENCE
 MANUAL RUN
 PUMP RUN INDICATOR
 CONFORMAL COATED CIRCUIT BOARD
 PADLOCK
 NEMA 4X ENCLOSURE ASSEMBLY
 CORROSION PROOF THERMOPLASTIC
 POLYESTER APPROVED BY UL FOR
 ELECTRICAL CONTROL ENCLOSURE



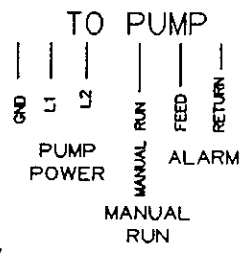
OPTIONS:

- ALARM CONTACTS
- HOUR METER



CE UPCC® ASNE A112.3.4
 SP UL NSF
 LR28268 LISTED 506D

PIN	FUNCTION	2000S	EXTREME
1	MANUAL RUN	RED	BROWN
2	L1	BLACK	RED
3	L2	WHITE	BLACK
4	GND	GREEN	GRN/YEL
5	ALARM FEED	ORANGE	YELLOW
6	ALARM RETURN	BLUE	BLUE



CONTROL CABLE:
 TYPE TC: DIRECT BURIAL, 12AWG,
 SIX CONDUCTOR

AD	SM	11/09/07	D	N/A
DR BY	CHK'D	DATE	ISSUE	SCALE



SIMPLEX SENTRY, 240V 60Hz.
 DOUBLE POLE POWER

LM000326



WELCOME
[News & Events](#)
[Distributor Locator](#)
[Search This Site](#)
[Feedback](#)

WHOLESALE
 PRODUCTS
[Sump/Effluent Pumps](#)
[Effluent Pumps](#)
[Sewage Ejector
 Pumps](#)
[Packaged Pump
 Systems](#)
[Special Purpose
 Pumps](#)
[Price Pages](#)

ENGINEERED
 PRODUCTS
[Grinder Pumps](#)
[Grinder Pump
 Systems](#)
[Non-Clog Dry Pit
 Pumps](#)
[Non-Clog Pumps](#)
[Self-Priming Pumps](#)
[Sewage Ejector
 Pumps](#)

ACCESSORIES
[Control Panels](#)
[Float Switches](#)

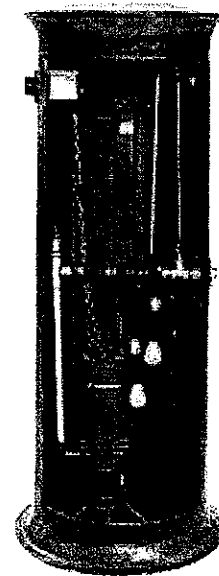
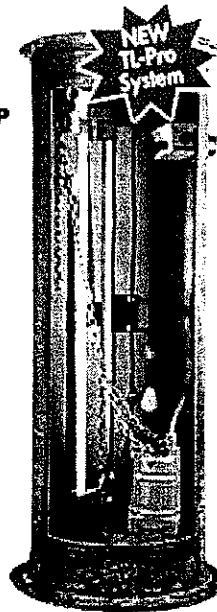
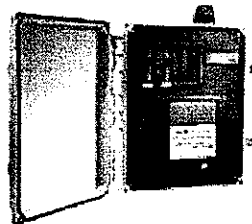
VALUE
 SERVICES
[Contact Us](#)
[Directions to
 Hydromatic](#)
[Requests](#)
[Software](#)

MADE FOR YOU
 Click here if you are a
 Hydromatic distributor
 or representatives.



Complete Grinder Package Offering

Package includes
 your choice of a 2HP
 submersible grinder
 pump, TL-Pro or
 TG-Pro lift out
 system, control
 panel, three floats
 and a fiberglass
 basin with anti-
 floatation collar.



Hydromatic's complete grinder package is a proven, innovative solution to a changing world. The use of grinder pumps prove to be a superior solution that is cost effective and minimally disruptive to the natural environment. Submersible Grinder Pumps keep beauty in the environment and cash in the pocket.

A grinder pump based system can be installed using relatively small diameter piping (as small as 1-1/4 " to 2" laterals and mains), which can be laid in shallow trenches. Since the wastewater is pumped under low pressures, the piping can follow the terrain and be installed at minimal depths (just under the frost line in colder climates and according to local codes).

Cost savings come from the ability to eliminate costly deep excavation and through the use of small diameter pipe. Minimal excavation and soil disruption means that the beauty of any existing natural surrounding features can be saved.

TL-Pro System New!

A quality lift-out system available with your choice of a Hydromatic 2HP submersible rated grinder pump, the new **Float Plus** control panel, three weighted float switches and a

Copyright © Pentair
Pump Group All
Rights Reserved.
[Privacy Policy](#)
[Terms and Conditions](#)

fiberglass basin with anti-floatation collar. The *Complete Grinder Package Offering* is available with your choice of either **HPG200**, **HPGR200** or **HPGX** submersible rated, centrifugal grinder pump.

TG-Pro System Improved!

A quality flex hose design system available with a choice of a Hydromatic 2HP submersible rated grinder pump, the new **Float Plus** control panel, three weighted float switches and a fiberglass basin with anti-floatation collar. The *Complete Grinder Package Offering* is available with your choice of either a **HPG200** or **HPGR200** centrifugal grinder pump or a **HPD200** semi-positive displacement, submersible rated grinder pump.

EZ-Out System (for use with 2HP grinders only)

Complete fiberglass basin with cover, and stainless steel upper guide rail bracket lifting chain. Available with your choice of Hydromatic's 2HP HPG200 or HPGR200 centrifugal grinder pump.

Hydro-Rail System (for use with 2HP grinders only)

Complete fiberglass basin with cover, and stainless steel upper guide rail bracket lifting chain. Available with your choice of a Hydromatic vertical discharge grinder pump.

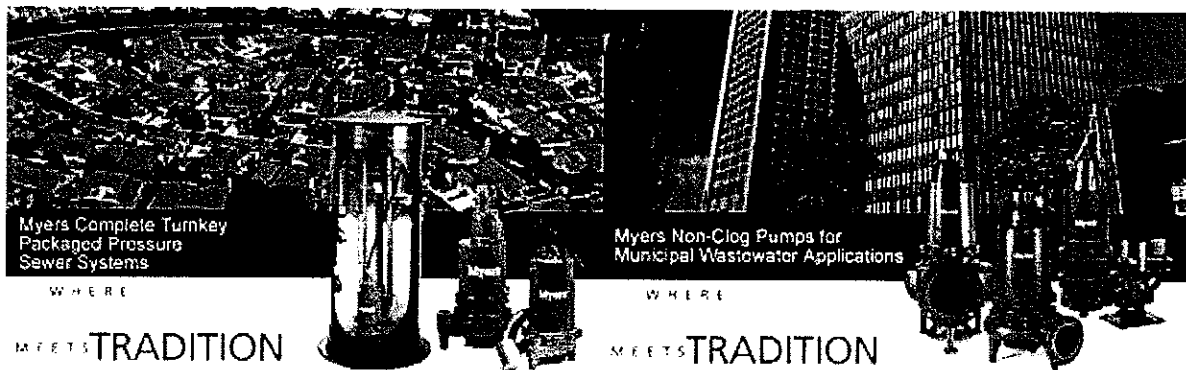
Hydromatic reserves the right to make revisions to its products and their specifications, this catalog and related information without notice. Most models are UL Listed and/or CSA Approved.



Pentair Water

USA - 1101 Myers Parkway Ashland, Ohio 44805 • Phone: 419-289-1144 • Fax: 419-289-6658
 Canada - 269 Trillium Drive Kitchener, Ontario, Canada N2G 4W5 • Phone: 519-748-5470 • Fax: 519-748-2553

[Home](#) [News](#) [Products](#) [Services](#) [Software](#) [Request](#) [Contact](#) [Locator](#) [Login](#)



Myers engineered wastewater products are known throughout the market for quality, value, innovation and reliability. Need a Myers wastewater product installation manual, parts list or brochure? Click on the below button to access the wastewater and pressure sewage systems library of documents.



[Click Here to Download](#)

parts list, manuals and brochures of wastewater pumps and systems



Grinder Pumps

- A market leader in the development and installation of grinder pump systems.
- 2 HP through 15 HP grinder pumps with lifts to 260 feet and flows to 190 GPM.
- Offered as complete turnkey systems or engineered to specification.
- Computer system design and selection programs available for design assistance.
- Explosion-proof construction available.

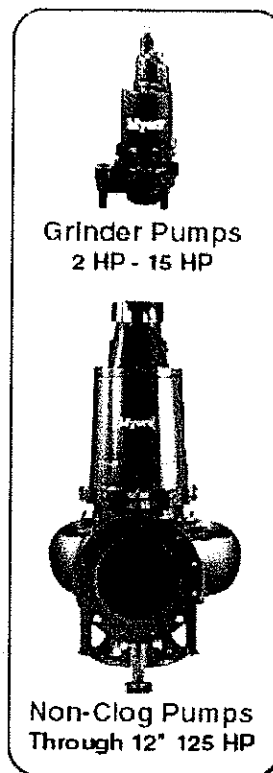
Non-Clogs Pumps

- 3" discharge through 12" discharge with 2" to 5.25" solids handling.
- 1 HP through 125 HP
- Lifts to 280 feet and flows to 8000 GPM.
- Computer system design and selection programs available.
- Explosion-proof construction available.

Accessories

- Custom designed controls and alarm panels.
- Liquid level controls.
- 3" through 12" guide rail lift-out packages.

- Explosion-proof construction available.
- Junction boxes, both standard and explosion-proof.



Myers, an industry leading complete turnkey company, providing engineered wastewater systems. Myers provides the most comprehensive personal engineered services available in the industry by assisting engineers, architects, developers and regional planners project assistance from the design inception through final product installation for their customized pressure sewer system.

Myers Collection System Design (CSD) assistance provides the most complete hydraulic modeling service in the industry. Myers CSD program simplifies, assists and provides quick results to engineers designing collection systems. Engineer's topographical drawings can be incorporated into the CSD program.

Myers Collection System Design service provides complete system detailed results including; flow capacities, head requirements, pipe size, pipe velocity, hydraulic grade and elevation, proper pump selection as well as pipe length and cost estimate. Myers offers these results in tabular form as well as illustrations on drawings provided to the Myers representative.

Myers Collection System Design service can be utilized for all types of pumps including grinders, non-clogs, effluent and small solids handling pumps. We can also accommodate a mixture of pump brands to assure you of system compatibility. Upon design completion and approval, Myers will custom manufacture, test and ship on time the pump systems per your exact specifications. Myers experienced nationwide network of technicians and service centers handle system start-up and maintenance requirements to assure the collection system constantly operates at peak efficiencies.

For more information, demonstration or complimentary copy of printed results of Myers Collection System Design (CSD) or Myers Automatic Pump Selection (MAPS) design assistance, Contact

your local Myers distributor to discuss specific wastewater pumping requirements. [Click here to locate the nearest Myers distributor in your area.](#)



Pressure Sewage Systems
Complete packaged systems available.



Software
Computer system design and selection programs available.



Copyright © The Pentair Pump Group
All Rights Reserved

[Privacy Policy](#) - [Terms and Conditions of Use](#)
By using this site, or by accessing any information on this site, you are agreeing to the [Terms and Conditions](#).


[Press Releases](#)
[Corporate Overview](#)
[Career Opportunities](#)

[Introduction](#)
[Product Catalog](#)
[Technical Reprints](#)
[Case Studies](#)
[Service](#)
[D](#)

PRODUCT CATALOG

[Grinder Pumps](#)
[Panels](#)
[Laterals](#)
[Price Lists](#)
[Specifications](#)
[Performance Curve](#)
[LPS Design](#)
[Distributor Connection](#)

GRINDER PUMPS

[2000 Series](#) | [Indoor Units](#) | [1000 Series](#) | [Gatorgri](#)

2000 Series | GP 2010

The E/One model GP 2010 simplex grinder pump station is an ideal choice for single-family homes. Grinder pumps pump wastewater from the home to the central sewer and/or treatment system through small-diameter pipes.


[NEXT](#)
[Features](#) | [Operational Information](#) | [Drawings & Installation Instructions](#)

Features

The GP 2010 grinder pump station consists of a pump and tank. The grinder pump, motor control and sensing are integrated into a compact unit, easily removable for service.

Solids are ground into fine particles that pass easily through the pump, check valve and small-diameter lines — even objects that should not be in sewage, such as plastic, rubber, fiber, wood, etc. The discharge connection can be adapted to any piping materials that meet local code requirements.

The tank is made from tough, corrosion-resistant HDPE. The optimum tank capacity of 70 gallons is based on computer studies of water usage patterns. A single GP 2010 is ideal for one, average single-family home. The GP 2010 can be used for up to two homes where codes allow and with consent of the factory. The GP 2010 can accommodate flows of 700 gallons per day.

The grinder pump is automatically activated and, because it runs infrequently and for very short periods, annual electric energy consumption is typically that of a 40-watt light bulb.

E/One grinder pumps do not require preventive maintenance and boast an average of eight to 10 years between service calls. If service is required, the unique, one-piece core eliminates the need for intricate troubleshooting and servicing — the pump core can be quickly pulled out and replaced, meaning lower maintenance costs and inconvenience for the homeowner.

Units are available for indoor and outdoor installations. Outdoor units accommodate a wide range of environmental conditions.

Environment One Corporation
 2773 Balltown Road, Niskayuna, NY 12309-1090
 T: 518.346.6161 ext. 3028, F: 518.346.6188