



December 2024 - Digital Newsletter



Amity Township Police Department has "We Support Our Local Police" signs available for purchase. The signs are \$20 each and include a yard stake. A portion of the proceeds will be donated to a local charity. We accept check or money order. Office hours are M-F 8am-4:30pm.



Happy 7th Birthday to the Little Red Mailbox of HOPE!

The mailbox was originally dedicated to providing visitors to the park with a place to reflect upon feelings of sadness, loss or grief. It has evolved into a place where you could read a note or leave a note that may become an inspiration for someone who may need it.

We are starting an Adopt a Mailbox program, where YOU can volunteer to be a Mailbox Angel for a 3-month term.

Being a Mailbox Angel is Easy!

- ✓ Email ctrombley33@icloud.com or call 610-507-3142 to sign up!
- ✓ Visit the park once monthly to remove any inappropriate comments from journals and if maintenance is necessary, report it to Cyndi.
- ✓ Decorate the Little Red Mailbox of HOPE for its birthday and holidays, sending pictures to Cyndi to post on the Little Red Mailbox of HOPE's Facebook page.
- ✓ Work with Cyndi to return the journals that are full and receive new journals, at NO COST to you.

Volunteer today!



The Board of Supervisors has approved advertising the 2025 draft budget. The main increase in the 2025 budget consists of personnel related expenses, storm water costs, and CPI adjustments for nearly all expenses. The draft budget requires a small increase of .300 mil, equating to \$30.00 per \$100k of assessed value. The majority of this increase is to fund an additional officer in the Police Department.

The major upgrade/expansion of the Wastewater Treatment Plant is underway and will be ongoing for 12-18 months. In order to fund these major improvements, sewer rates will increase from \$145.00/quarter to \$171.00/quarter. Rates will be re-evaluated as needed.

The proposed budget is available for public inspection for a minimum of 20 days and will be considered for adoption at the Board meeting scheduled for December 18th.

Current Projects in Amity Township



Like many municipalities, Amity Township is dealing with aging storm water systems. One of the larger projects currently underway is installing a new storm water system on Nicholson Avenue. This project will cost roughly \$800,000 to complete. Currently crews from Windstream are moving underground fiber lines so that Amity Township can install a new storm water system and repave the entire road. This will include replacing some curbs, sidewalks and driveway aprons. We hope to have this project completely finished by the summer of 2025.

Initially built in 1975, the Amity Township Waste Water Plant is currently going under a \$37 million dollar upgrade. This project will take several years to complete.



Many of the sanitary sewer lines that were installed in the mid 1970's are still in use today.



Quarterly sewer rates are increasing to \$171.00 with the January 1st bills.

Be sure to update your auto pay accordingly.

Boone Area Library

Holiday
SIP & PAINT



Thursday December 5th 6-8pm

You bring the wine we supply the paint!

You bring the wine, we supply the paint! Come paint a holiday inspired canvas led by Miss Amber. Tickets are \$20 each

All materials and instruction included in ticket price.

All proceeds go to the Library. You **MUST** be 18 years or older to participate. Register and purchase your tickets at the circulation desk. Any questions email Amber at youthlibrarian@boonelibrary.org.



Monarch Fire Co Steak & Shrimp

Saturday, December 7th 4pm-7pm

50 Pennsylvania Ave, Douglassville PA 19518



**The 42nd Annual
Daniel Boone Optimist Club
*Holiday Craft Show***

Saturday December 7, 2024

9:00 a.m. to 4:00 p.m.

Daniel Boone Middle School

**1845 Weavertown Road
Douglassville, PA 19518**

Quality Handcrafted Items From Over 100 crafters

**Free Admission * Free Parking
Refreshments * Raffle**



**For questions email: DBCraftShow@gmail.com
www.danielbooneoptimist.com**



Optimist
Daniel Boone

SPONSORED BY:

BLAZER
EDUCATION FOUNDATION



Winter WONDERLAND

TREE LIGHTING
SANTA
FOOD & FESTIVE BEVERAGE TENT
LIVE NATIVITY
HOLIDAY TREE DECORATING CONTEST
DBMS SELECT CHORUS
EURILLO MUSIC STUDIO SINGERS



DECEMBER 7TH, 2024

5:00 PM - 8:00 PM

AMITY COMMUNITY PARK

BLAZERFOUNDATION.ORG
DANIELBOONEOPTIMIST.COM



As part of our Winter Wonderland in Amity event on Saturday, December 7, 2024, at the Amity Township Park (next to Daniel Boone Area Middle School), the Blazer Foundation and the Daniel Boone Optimist Club are hosting a Tree Decorating Contest! 🌲 Show us your holiday spirit and creativity by decorating a tree that celebrates the season in style! Families, local businesses, and community groups are all welcome to join the fun!

\$50 Amazon Gift Cards awarded to the winning tree in each of the following categories: Best Overall Christmas Spirit, Most Creative and Most Eco-Friendly.

Rules & Register Here!

Join us for our 4th annual GingerBread House Contest! Kits go on sale Monday November 18th for \$25 dollars. When purchasing your kit please register at the desk to receive the rules and regulations for the contest. All proceeds benefit the library!

BOONE AREA LIBRARY GINGERBREAD HOUSE CONTEST

WHEN PURCHASING YOUR
KIT PLEASE REGISTER AT
THE DESK TO RECEIVE THE
RULES AND GUIDELINES OF
THE CONTEST



- COMPLETED HOUSES DUE BY **SATURDAY DECEMBER 7TH** AT 5PM
- WINNER WILL BE CHOSEN ON **SATURDAY DECEMBER 14TH** AT 6PM

1ST PLACE- AMAZON GIFT CARD
2ND PLACE- MOVIE NIGHT BASKET
3RD PLACE- HOT CHOCOLATE KITS

All proceeds benefit the Boone Area Library

Monocacy Hill Walk in the Woods

SUN, DECEMBER 8, 1:30 PM - WALK IN THE WOODS

ALL WALKS START FROM THE PARK ENTRANCE (GEIGER ROAD PARKING LOT) AND ARE FREE AND OPEN TO THE PUBLIC. ALL CHILDREN YOUNGER THAN 18 YEARS OF AGE MUST ACCOMPANIED BY AN ADULT.



A Homestead Holiday

Sunday, December 8, 2024 • 12-4pm

400 Daniel Boone Road, Birdsboro, PA

For many families in eighteenth century America, Christmas was a time for celebration, feasting, and frivolity. Join us at the Daniel Boone Homestead and experience Christmas as it was almost 300 years ago with your family and friends. Visitors can learn about English and Pennsylvania German holiday celebrations and enjoy Christmas crafts and activities. Throughout the historic area, visitors will hear about the different Christmas traditions of the families who lived on the property throughout the eighteenth century as they tour the festively decorated buildings.



Come for a FUN and CREATIVE night of making ornaments for the Holidays! Choose from 3 different ornaments to make. All ages are welcome. No registration required.

BOONE AREA LIBRARY



BOOKS AND BAKE SALE



December 13th & 14th

9am-5pm & 9am-7pm

Join us for our Christmas fundraiser for the Library!

Paper Pie Books will be selling all age kids books and toys! The more we sell the more free items we can get for the Library!

Enjoys tables of baked goods and other Christmas goodies.

Also try your luck in winning some raffle baskets, and make sure to stop by to help vote on our gingerbread house contest!

The Carousel at Pottstown

CHRISTMAS *at the* CAROUSEL

Main Event :

- Pictures & Visit with Santa and Mrs. Claus
- Carousel Rides
- Hot Chocolate & Cookies for sale
- Antique skee ball and pinball games



DEC 14
2024

12:00-2:00 PM

30 W King St
Pottstown, PA 19464



FREE ENTRY



Boone Area Library

Holiday

GIFT WRAPPING HELP NIGHT

Thursday December 19th

6-8pm



Do you need time and space to wrap those holiday gifts? Come to the library's community room for a wrapping getaway! Some supplies provided first come first serve. This event is for adults only. No registration required.



Amity Fire Company will be bringing Santa through the streets of Amity Township on Saturday, December 21st beginning at 11am. Watch our Facebook page for updates.



Monarch Fire Company is finalizing the date and time to bring Santa through the streets of Amity Township. Watch our Facebook page for updates.

Township offices will be closing at noon on December 24th and closed December 25th in observance of the holiday.

Township offices will be closed on New Year's Day January 1st.





Noon Year's Eve December 31, 2024

9am-12pm

500 Museum Rd. Reading, PA 19611

Join Museum Educators and other community partners as we ring in the New Year. Families will be able to create some fun props and noisemakers commonly used for this holiday.

Children will also be able to dance the wait away as we count down to the noon hour. At that time, we will have a balloon drop in the Neag Planetarium. It is sure to be a great time!

..... FIVE PET SAFETY TIPS FOR

The Holidays

TVET360

It's great fun to celebrate holiday festivities with our pets, but make sure you monitor your pets and what they're eating! Keep your pet safe with these five tips:



1.

Alcohol poisoning can cause serious complications, so keep wine glasses and beer bottles away from sneaky paws.



2.

Many holiday treats are full of fruits, like raisins and grapes, and sweets, like chocolate and xylitol, that are toxic to our pets. Keep that plate of treats in the kitchen and away from pets.



3.

Almost all traditional winter plants, like holly, poinsettias and mistletoe, can cause severe organ damage if pets ingest them. These plants may look pretty, but think twice before bringing them into your home this season.



5.

Try to keep cats from climbing Christmas trees, as kitties could knock the trees over and seriously hurt themselves in the process.



4.

Shiny, sparkly wrapping paper and ribbon look like fun toys, but pets can accidentally ingest them while playing. Clean up as soon as gifts are opened.



HOLIDAY SAFETY TIPS

55 TIPS TO PROTECT YOUR HOME DURING THE HOLIDAYS

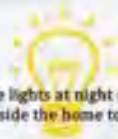


HOLIDAY THEFT

Theft overall tends to rise in the months of November and December. Best thing to do is to make sure you secure everything that you can. Lock up cars, trucks, and homes.

LEAVE THE LIGHTS ON

Thieves usually don't approach homes that appear to be occupied. Leave on outside lights at night (or set them with a timer) and when you leave the house during the day; leave on some of the lights inside the home to give the appearance that someone is home.



PACKAGE DELIVERY

More and more people are purchasing gifts online and having them shipped to their home. With this trend, more people are having packages stolen right off their front porch. If you're expecting packages, request signature confirmation or have a trusted neighbor hold on to it for you.

COOKING HAZARDS

A fried turkey is delicious. A fried house due to a deep fryer accident is not. Make sure you read the instructions on how to prepare your turkey safely and please, use the deep fryer OUTSIDE of the house.



DECORATION HAZARDS

Speaking of fires, Christmas tree fires can be devastating for what is normally such a beacon of happiness. If you have a live tree, make sure that it has water every day, and ensure that any lights you use are checked for breaks or exposed wires.

CREATIVE DISPOSAL

Dispose of your presents boxes creatively - placing that 60" TV box outside on trash day after Christmas is just asking for trouble. Try and break down boxes and other packaging as to not give away the wonderful gifts your family received.



SOCIAL MEDIA

In today's inter-connected age, it's important to be very careful about what you share on social media. Be very careful about what you post and if you do decide to share your gifts, please make sure you don't have your location tagged to the post.

TRAVEL

If you're traveling to visit family or going on a holiday vacation, wait until after your trip to post about it. Have a good friend or neighbor check on your house every couple of days to give you an update.



DECORATIONS & LIGHTING

Make sure not to run extension cords through windows or garage doors. Just the slightest crack can expose a home to thieves.

WHO'S AT THE DOOR

Criminals can try and scope at your home posing as a delivery person or someone looking for charitable donations. Be cautious when talking to people you're unfamiliar with and don't let them in your home.



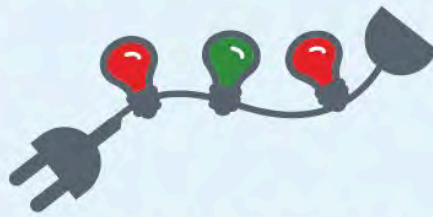
Put a **FREEZE** on Winter Holiday Fires

Did you know?



A heat source too close to the Christmas tree causes **1 in every 4** winter fires.

As you deck the halls this season, be fire smart.



Read manufacturer's instructions for the number of light strands to connect.



Make sure your tree is **at least 3 feet away** from heat sources like fireplaces, radiators and space heaters.



U.S. Fire Administration





Outdoor Christmas **LIGHT SAFETY**

1 INSPECT, INSPECT, AND INSPECT!

Look at every string and decoration over before using it this year.

2 SPEND THE MONEY. A few years of saving money by using old or damaged items may be negated when one fire erupts.

3 USE GROUND FAULT CIRCUIT INTERRUPTERS (GFCI'S). If the outdoor decorations don't have one built in, then be sure your outdoor receptacle is protected, either at the outlet itself or in the breaker panel.

4 AVOID STANDING WATER OR AREAS WHERE WATER MAY GATHER. If you know that water will accumulate, then pass that area over.

5 HAVE A BASIC UNDERSTANDING OF AMPERAGES AND THE LOADS ON YOUR CIRCUITS. Divide the total wattage by the voltage available, usually 120 Volts, to figure the correct amperage. Most outdoor receptacles are 20 Amp, so don't overload them.

6 USE THE HEAVIEST OUTDOOR EXTENSION CORDS. If you are putting several strings of lights, then get the heavier option.

7 PURCHASE LIGHTS RATED FOR OUTDOOR USE. LED's are a great option since they don't give off heat and are not a fire hazard.

8 USE THE CORRECT CLIPS. Do not staple your lights to the house. Use gutter clips or screw-in clips.

9 USE THE CORRECT LADDER! The rule says that if you are on a ladder, the center of your waist, the buckle area, should not extend beyond the side rail of the ladder.

10 IF YOU DECORATE YEARLY, INVEST IN EXTRA OUTDOOR RECEPTACLES NEAR WHERE THEY ARE NEEDED. This eliminates the over-use of extension cords and allows you to get to power where it is needed.

11 PUT THEM ON A TIMER OR LIGHT SENSOR. This not only keeps them from burning all day, but it saves on your power bill.

12 TURN THEM OFF BEFORE LEAVING HOME OR GOING TO BED.

Pull the Plug on Cord-Related Hazards this Holiday Season

While extension cord safety is a year-round concern, use of these devices is often more prominent during the holidays due to the increased use of electrical lights and decorations. Following a few simple safety guidelines can prevent dangerous mistakes with extension cords this holiday season.



Purchase cords from authorized retailers. Never use an extension cord that does not carry the certification label of a recognized testing laboratory such as Underwriters Laboratories (UL), Intertek (ETL) or Canadian Standards Association (CSA).



Make sure extension cords are properly rated for their intended use—indoor or outdoor—and meet or exceed the power needs of the device being used.

Keep all outdoor extension cords clear of snow and standing water and well-protected from the elements.



Do not overload extension cords.

Examine cords before each use. Cracked, frayed, or otherwise damaged cords should be replaced immediately.



Multiple plug outlets must be plugged directly into mounted electrical receptacles; they cannot be chained together.



Extension cords are meant to provide a temporary solution and should not be used as a long-term or permanent electrical circuit.

Do not run cords through walls, doorways, ceilings or floors.



WINTER WEATHER WATER GUIDE

HANDY TIPS TO KEEP YOUR PIPES FROM FREEZING

It's all about prevention

Proper prevention keeps you without water in the worst of weather. And cost a lot to repair. But with a few simple steps, you can easily preserve both your budget and your peace of mind.

AMERICAN WATER

BEFORE COLD WEATHER SETS IN:



Check sprinkler or irrigation systems

Make sure you've turned everything off and fully drained the system.



Identify your home's freezing points

Check your home for pipes in areas that might be prone to freezing, such as crawl spaces, unfinished rooms, basements, garages and utility walls.



Know how to shut off your water

Locate your main water shut-off valve. You may want to tag or label it so you don't have to search for it in an emergency.



Strengthen your defenses

Eliminate sources of cold air near water lines by closing off entry spaces, fixing drafty windows, insulating walls and attics, and plugging draft around doors.



Protect your pipes

Where pipes are exposed to cold, wrap them with insulation or weatherstripping. Heat tape, if used, or heat cables can help.

WHEN TEMPERATURES STAY BELOW FREEZING:



Keep water working

Keep water moving through the pipes by allowing a small trickle of water to run.



Give pipes a helping hand

If pipes run through basements or garages, open the doors to let warmer room temperatures flow in.

BUT IF YOUR PIPES DO FREEZE:



Thaw pipes with warm air

You can melt the frozen water in the pipe by warming the air around it with a hair dryer or space heater. Be sure not to leave space heaters unattended and avoid the use of kerosene heaters or open flames.



Shut off the water immediately

Don't attempt to thaw pipes without turning off the main shut-off valve.



Be careful turning water back on

Once pipes are thawed, slowly turn the water back on and check pipes and joints for any leaks or signs that might have been caused by freezing.

Protect Your Natural Gas Meter This Winter

Heavy snow and ice can damage natural gas meters or create hazardous leaks.

While the best option is to protect your meter with a snow shelter, there are other easy ways to keep an unsheltered meter safe:

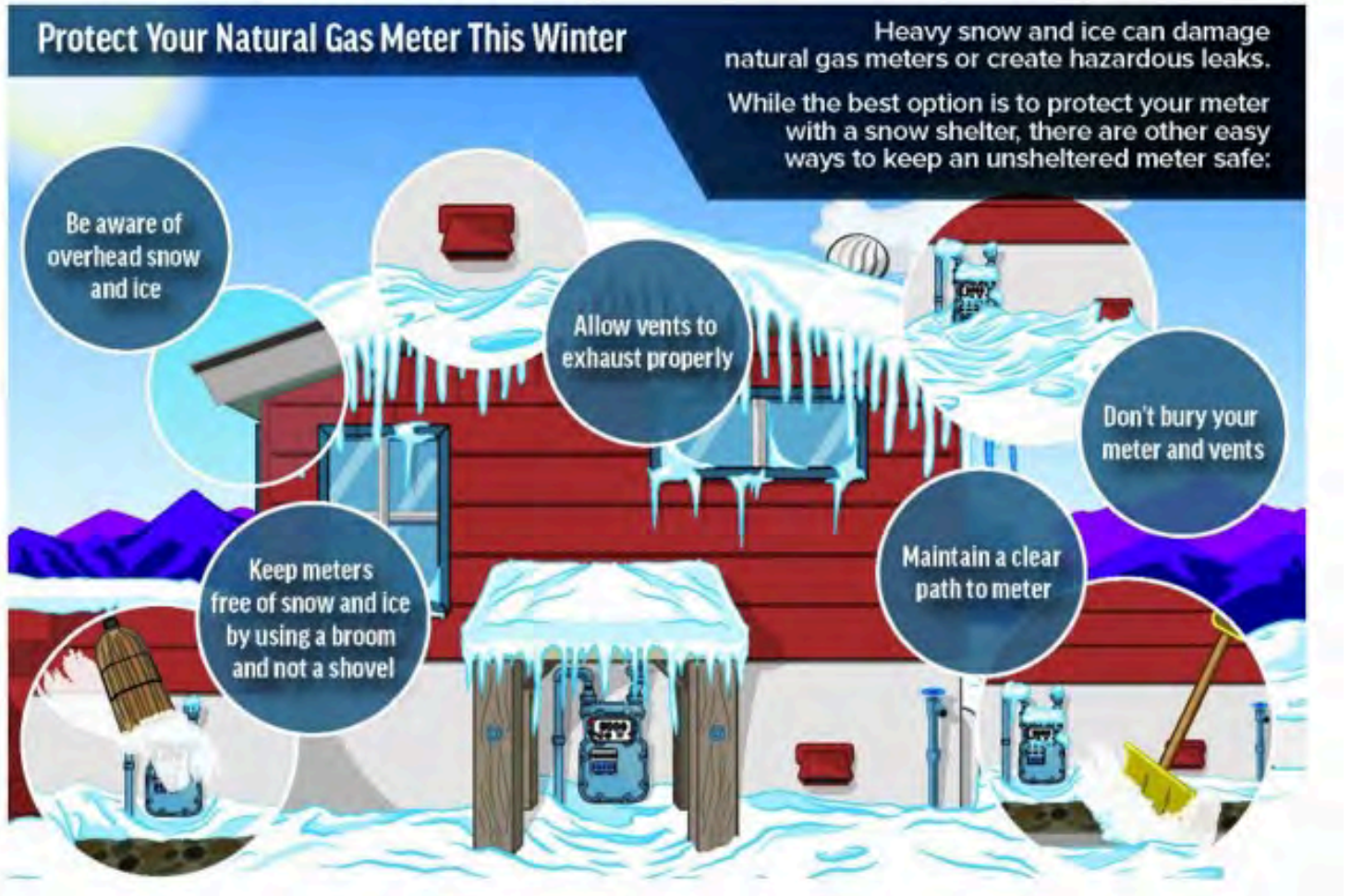
Be aware of overhead snow and ice

Allow vents to exhaust properly

Don't bury your meter and vents

Keep meters free of snow and ice by using a broom and not a shovel

Maintain a clear path to meter





Electric Portable Space Heater Safety

When the weather turns cold, it can bring a chill into our homes. Portable space heaters have become a popular way to supplement central heating or heat one room. If you plan to use portable electric space heaters, make sure to follow these tips and recommendations:

HEATER CHECKLIST

- Purchase a heater with the seal of a qualified testing laboratory.
- Keep the heater at least 3 feet (1 metre) away from anything that can burn, including people.
- Choose a heater with a thermostat and overheat protection.
- Place the heater on a solid, flat surface.
- Make sure your heater has an auto shut-off to turn the heater off if it tips over.
- Keep space heaters out of the way of foot traffic. Never block an exit.
- Keep children away from the space heater.
- Plug the heater directly into the wall outlet. Never use an extension cord.
- Space heaters should be turned off and unplugged when you leave the room or go to bed.

Types of electric space heaters

Oil or water-filled radiator

Heated oil or water travels through the heater.

Fan-forced heater

A fan blows warm air over metal coils.

Ceramic heater

Air is warmed over a ceramic heating element.

Infrared heaters

Heat is created by infrared bulbs.

Fact

Two in five deaths in space heater fires involve portable electric space heaters.



**NATIONAL FIRE
PROTECTION ASSOCIATION**
The leading information and knowledge resource
on fire, electrical and related hazards



After the holidays, our Public Works crews will work through the Township to collect and chip trees on Thursdays: January 2nd, 9th and 23rd and on Tuesdays: January 7th, 14th and 21st. Crews will work through the Township using the same schedule as leaf collection.

If your address is not listed in any of the zones, then your collection will start after zone 3 is completed.

Place your tree away from trash bins to avoid haulers disposing of your tree. Remove all decorations and lights from your trees before putting them out for pick-up.

STREETS ARE LISTED BELOW IN THE ORDER OF HOW COLLECTION IS HANDLED

ZONE 1
ZONE 2
ZONE 3

- Griffith Drive to Heather Court, going North to Poplar Drive, East to Griffith Drive, then to Juniper Drive, Hickory Lane, Elliott Drive, Elliott Court and Holly Drive.
- Richards Avenue, Merritt Avenue, Maplewood Court, Maplewood Drive, Nicholson Avenue, Fernwood Avenue, Briarwood Drive, Lake Drive, Rosewood Drive, Spruce Court, Rosewood Court, N. and S. Pinewood Drive, Dogwood Drive and Terry Court.
- Laurelwood Drive, Glenwood Drive, Willowood Drive, Magnolia Drive, Willowood Court, Birchwood Court, Aspen Court, Ash Court, Redwood Drive, Lilac Lane, Lilac Court, Ivy Court, Ivy Lane, Russell Avenue from Old Airport Road to Ivy Lane, Russell Avenue to Old Swede Road, Elmwood Lane, Mulberry Place, north end of Maplewood Drive, Ridge Drive, Firethorn Drive, Mimosa Circle, Linden Place, Balsam Drive, Maple Lane, Bramblewood Court, Bramblewood Drive, Maplewood Drive and Old Airport Road.
-
- W. Welsh Drive, Penns Lane, Cedar Run, Battenkill Drive, Queen Ann Circle, Victoria Drive, Loyalsock Drive, North Monocacy Creek Road, Letort Lane, Kettle Lane, Swatara Circle, Greys Run Lane, Antietam Drive, Hill Drive, Hill Road, Slate Run Road, Chefield Court, Kingston Drive, Cameron Drive, Bristol Court, Berkshire Drive, West Morlatton Road, Oxford Circle, Yorkshire Drive, Shagbark Lane, Woodbridge Lane, Ashford Drive, Clarion Drive and Woodbridge Court
-
- Overlook Pointe, Schoolhouse Court, Pleasant Run Court, Rosecliff Drive, Pepper Lane, Rising Sun Drive, Boone Drive and Thornbury Circle, Meadowcrest Lane, Meadowcrest Court, Windmead Lane, Rosewyn Lane, Verdure Lane, Avimore Lane, Fenwick Lane and Pine Forge Road, Green Meadow Drive, Meadowside Drive, Summer Meadow Drive, Peach Blossom Drive, Highmeadows Drive, Shadybrooke Drive, Pine Lane, Stephens Way and Woodbrooke Drive.



Daniel Boone

Optimist Club Essay Contest



Topic

“How Optimism Has Paved My Road to Success”

Compose a 700- to 800-word essay around this central idea

Open to Participants under the age of 19 as of October 1, 2024 (and is not enrolled as a degree seeking student of a post-secondary institution.)

Entry Due to Daniel Boone Optimist Club by 2/3/2025

Mail Essay & Completed Application to:

Attn: Anne Pyle, Essay Contest Chair
Daniel Boone Optimist Club
P.O. Box 98
Douglassville, PA 19518

In addition to developing skills for written expression, the club winner will be awarded \$150 and will advance to the District Level competition where the winner is awarded a \$2,500 scholarship.

Follow complete “Official Rules” posted on

<http://www.optimist.org/>

Essay Application:

https://www.optimist.org/Documents/2025/programs/24-25_Essay_Application.pdf

Email **Anne Pyle** @ am_pyle@yahoo.com for additional information

Essay Application



Residents struggling with their home heating bills may apply for assistance from the Low-Income Home Energy Assistance Program (LIHEAP).

LIHEAP is a federally funded program that helps individuals and families pay their heating bills through home heating energy assistance grants. It also provides crisis grants to help in the event of an emergency or if a resident is in danger of losing his or her heat due to broken equipment, lack of fuel or termination of utility service.

The income eligibility guidelines for LIHEAP are \$22,590 for an individual, \$30,660 for a couple and \$46,800 for a family of four. Residents may apply for LIHEAP online, by phone 610-736-4228 or by contacting their local county assistance office 610-736-4211.

The program runs through April 4, 2025.

[Apply Now!](#)



Changing of the seasons brings different driving hazards, including wet leaves, fog, sun glare and frost.

Extra caution is needed on roads covered with wet leaves, which can be as slippery as ice. When driving in fog, it's best to use low-beam headlights to avoid the glare created by high beams. Morning frost and icy spots can cause issues as overnight temperatures drop toward freezing. Ice is more likely to form on bridges, overpasses and shaded areas.

Pennsylvania drivers face the third-highest chance of being involved in an animal-related crash in the nation. To report a dead animal for removal from a state road, call the PennDOT at 1-800-FIX-ROAD. Call the Game Commission at 1-833-742-9453 for local roads.



Thursday, December 12th at 7:00PM - Planning Commission

Tuesday, December 17th at 7:00PM - Parks and Recreation

Wednesday, December 18th at 7:00PM - Board of Supervisors

Meetings are held at the Township building, 2004 Weavertown Road.

Township offices will close at noon Dec. 24th and will be closed Dec. 25th

Amity Township Board of Supervisors

Kim McGrath, Chairperson / Dave Hackett, Vice Chair

Paul “Skip” Weller, Terry Jones, and Kevin Keifrider



Copyright (C) 2024 Amity Township. All rights reserved.

Our mailing address is:
Amity Township
2004 Weavertown Rd
Douglassville, PA 19518