

PLOTTED: 12/14/2022 1:55:08 PM

FILE NAME: H:\PennDOT\05\12741.00 BERKS 9\SR 2041\4.0 Dwgs\4.1 Transportation\05.2041.TCP.01.DETOUR.dgn

DISTRICT	COUNTY	ROUTE	SECTION	SHEET
5-0	BERKS	2041	03B	1 OF 3
AMITY TOWNSHIP				
REVISION NUMBER	REVISIONS	DATE	BY	

GENERAL NOTES

THIS WORK CONSISTS OF THE MAINTENANCE AND PROTECTION OF TRAFFIC AND THE PROTECTION OF THE TRAVELING PUBLIC APPROACHING THE CONSTRUCTION AREA AND WITHIN THE LIMITS OF CONSTRUCTION AND APPROVED DETOUR ROUTES

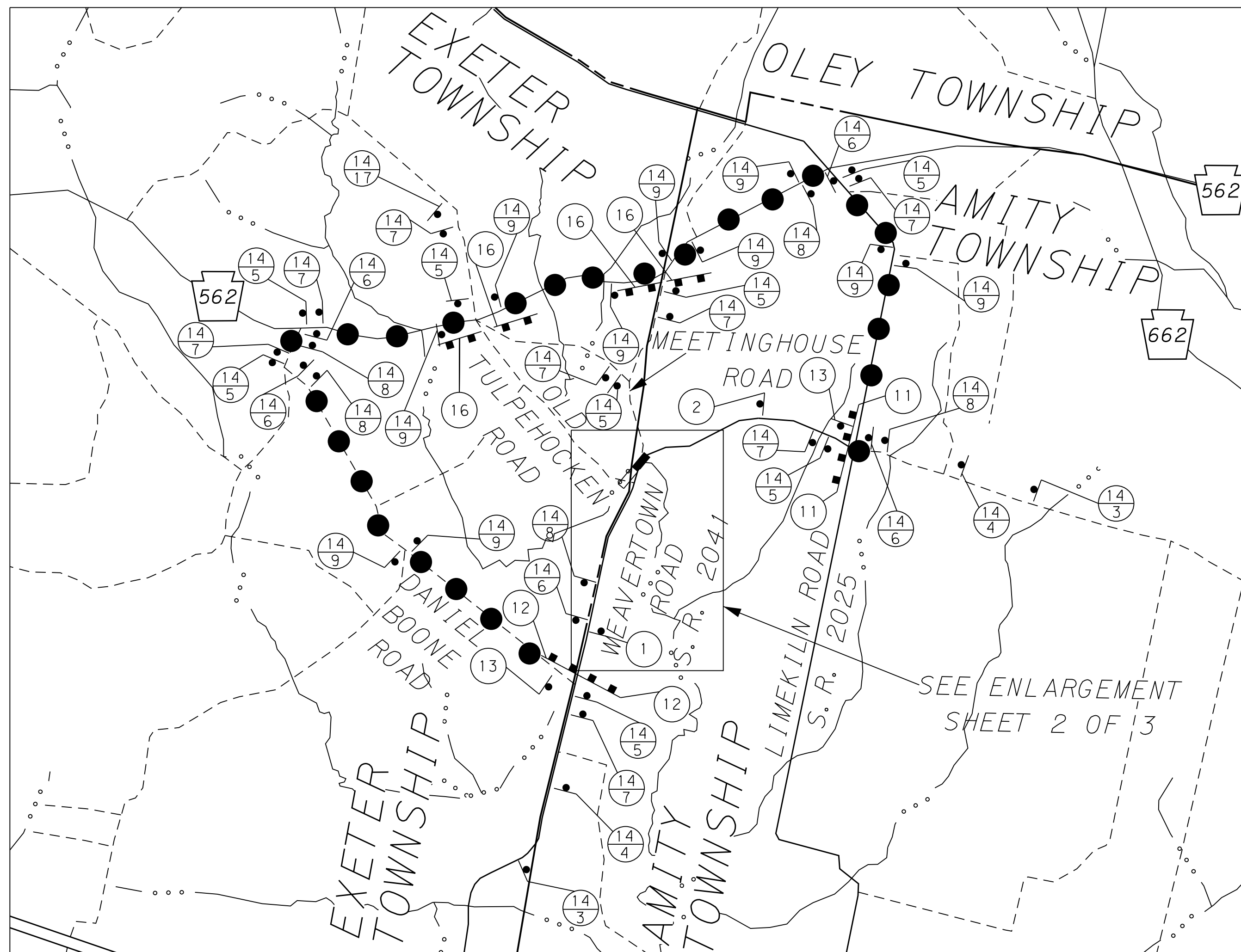
FURNISH, ERECT, PLACE AND MAINTAIN TRAFFIC CONTROL SIGNS AND DEVICES AND MAINTAIN TRAFFIC DURING HOURS OF CONSTRUCTION AND AT ALL OTHER TIMES IN ACCORDANCE WITH THE METHODS INDICATED ON THESE DRAWINGS AND THE FOLLOWING:

1. THE SPECIAL PROVISIONS OF THE CONTRACT.
2. PA CODE, TITLE 67, CHAPTER 212, OFFICIAL TRAFFIC CONTROL DEVICES.
3. PUBLICATION 213, TEMPORARY TRAFFIC CONTROL GUIDELINES.
4. PUBLICATION NO. 35, APPROVED CONSTRUCTION MATERIALS (BULLETIN 15).
5. PUBLICATION 408/2020 SPECIFICATIONS AND CURRENT INTERIMS.
6. FEDERAL HIGHWAY ADMINISTRATION, THE MANUAL OF UNIFORM TRAFFIC CONTROL DEVICES (MUTCD).
7. PUBLICATION 236 - HANDBOOK OF APPROVED SIGNS.
8. PUBLICATION 111, TRAFFIC CONTROL PAVEMENT MARKINGS AND SIGNING STANDARDS, TC-8600 AND TC-8700 SERIES.

ALL WORK IS TO BE PERFORMED WITHIN LEGAL RIGHT-OF-WAY.

IMMEDIATELY UPON COMPLETION OF THE WORK, REMOVE THE DEVICES. UNLESS OTHERWISE SPECIFIED, THEY REMAIN THE PROPERTY OF THE CONTRACTOR.

COVER OR REMOVE ALL SIGNS NOT IN USE OR CONFLICTING TO THE OPERATION BEING PERFORMED. WHEN COVERING THE EXISTING SIGNING DO NOT PUT TAPE ON THE FACE OF THE SIGN OR ATTACH ANY OTHER MATERIAL DIRECTLY TO THE FACE OF THE SIGN.



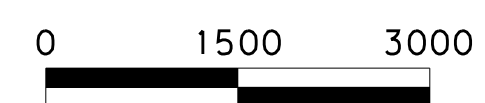
LEGEND

- PROJECT
- STATE ROUTE
- LOCAL ROAD
- SIGN REFERENCE NUMBER
- STREAM
- TOWNSHIP BOUNDARY
- DETOUR ROUTE
- TEMPORARY SIGN AND SUPPORT
- TYPE III BARRICADE

DETOUR MAP - SR 2041

DETOUR LENGTH = 4.4 MILES

SCALE

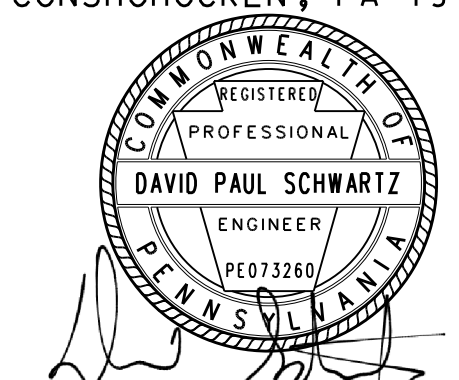


TRAFFIC CONTROL PLAN

RECOMMENDED _____ 20 _____

_____ DISTRICT TRAFFIC ENGINEER

PLANS PREPARED BY:
BERGMANN
 ARCHITECTS ENGINEERS PLANNERS
 SIX TOWER BRIDGE, SUITE 430
 181 WASHINGTON STREET
 CONSHOHOCKEN, PA 19428



REG PROF ENGINEER

DATE: 12/13/2022