



## February 2025 - Digital Newsletter

---



If you still need to dispose of your Christmas tree, you can bring it to the Township for recycling.

You will need a gate access code to recycle your tree.

---



1

Saturday, February 1, 2025 at 4:00 PM – 7:00 PM EST

## Steak and Shrimp Dinner

Monarch Fire Co Social Quarters

50 Pennsylvania Ave Douglassville, PA 19518

---



*Coffee* and  
**Conversations**

**Friday February 14th 9:30-10:30**

**Coffee/ Light Refreshments**

**Collage Crafting**

---

AMITYVILLE, PA.  
TROOP 597



Scouting America

**TROOP 597**



## Spaghetti Dinner

Eat in or Take out



**February 15, 2025**  
**4 PM - 7 PM**

St Paul's UCC,  
1979 Weavertown Rd,  
Douglassville

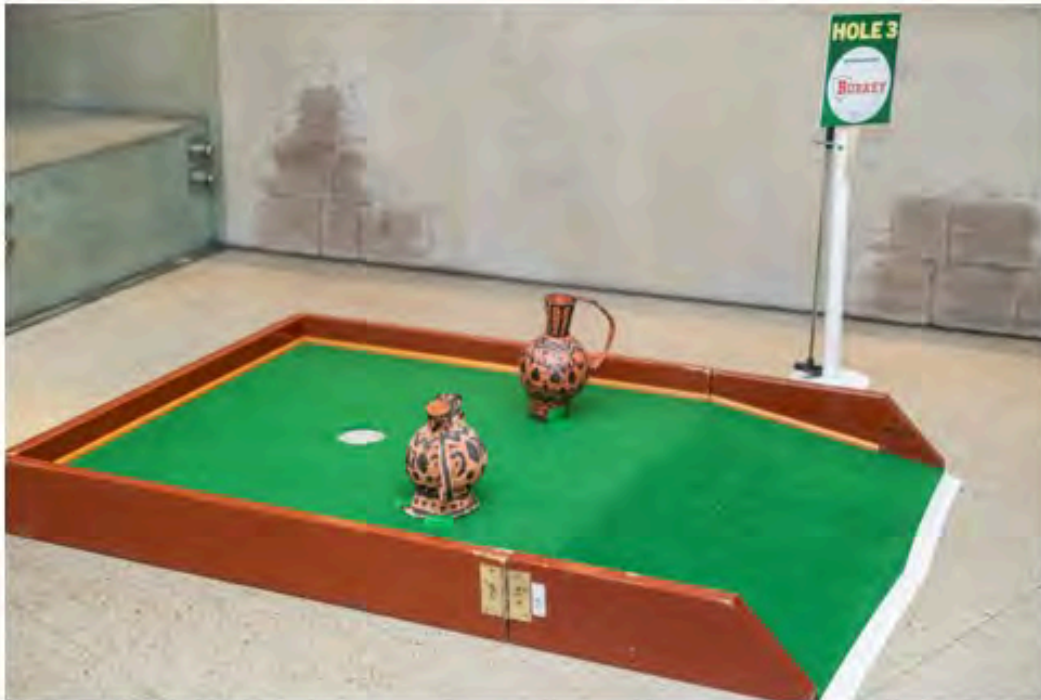
Tickets available from  
any Troop 597 scout  
or at the door

**ALL YOU CAN EAT**  
**PASTA, BREAD & SALAD**  
(with or without meatballs)  
**Adults (11 and up) - \$10.00**  
**Ages 10 and under - \$5.00**

**SAVE THE DATE!**

April 19 – Pancake breakfast – Bake Sale  
May 24 – Remembrance 5K Run

**[www.troop597.org](http://www.troop597.org)**



### **The 12th Annual Golfin' in the Galleries - Friday, February 14, 2025 | 6-9pm**

Spend this year's Valentine's Day at RPM challenging your date, friends, family, or colleagues in an intense 18-hole round of mini golf through all of the galleries on our first and second floors! Golfin' in the Galleries will be this year's perfect date night, double date, Galentine's celebration, or chance to blow off steam with your coworkers and friends. Along with a full game of mini golf, the night will include:

- Open Bar and roaming Bar Cart
- Delicious food stations
- Parting gift
- Putting Contest
- Raffle with fantastic prizes!

**TICKETS:** \$50 per Member individual, \$75 per Non-Member individual; \$200 per Member Foursome, \$300 per Non-Member Foursome

Purchase your tickets and register for the event using the form below!

**Would you or your business like to join in on the fun?**

**Ask Hannah how you can register your foursome or how your business can sponsor & support The Museum at Golfin' in the Galleries 2025! Contact Hannah at [hannah.alarcon@readingpublicmuseum.org](mailto:hannah.alarcon@readingpublicmuseum.org). Sponsorships levels start at \$500.**

---



## **Putt-Putt in the Galleries!**

**A fun, family activity during Presidents' Day Weekend!**

Mini golf through the galleries from 11am-5pm from February 15-17. No reservations necessary. \$5 per ball with the price of admission. Admissions is FREE for Members!

---



**"Wild Kratts®: Creature Power®!" and "Wild Kratts®: Ocean Adventure®"**

**January 18 - May 5, 2025**

*Wild Kratts®: Creature Power®!* and *Wild Kratts®: Ocean Adventure®*, two interactive exhibits based on the popular PBS Kids series, will open at the Reading Public Museum in the Second Floor Temporary Galleries. In these engaging exhibits - created by Minnesota Children's Museum in collaboration with the Kratt Brothers Company - kids and families explore animal and sea life habitats and the creatures within them.

These adventurous exhibits - which focus on cultivating STEM skills in children ages 3 to 9 - invite kids and families to explore animal habitats from around the globe, discover incredible creature powers and go on a mission to foil the villains' nefarious plans.



**Township offices will be closed on Monday, February 17<sup>th</sup> in observance of President's Day.**

---

# **CAR SEAT CHECK**

**Limerick Fire  
390 West Ridge Pike  
Limerick, PA 19468**

**3rd Tuesday of every month**



---

**Tuesday, February 18<sup>th</sup>, 2025, 9am-2:30pm**  
**Limerick Fire Department - Limerick Station**  
**390 West Ridge Pike - Limerick, PA 19468**

---



# Berks County Car Seat Check Location

## AAA READING-BERKS

### Safe Kids Berks County

 Cheryl Gouker

 (610) 374-4531

 [cgouker@aaardgberks.com](mailto:cgouker@aaardgberks.com)

 Monday, Tuesday, Wednesday, Thursday, Friday  
(9:00 AM - 5:00 PM)

 920 Van Reed Road, Wyomissing, PA

**Appointment is required**

---

# Rocking Chair Pilgrimages

*a storytelling group*

With Pat Babel

Thursday February 20th 4:30-5:30 pm

## *Love Stories*

- Bring a love story to share with the group
- Guided Meditation
- Summary and Questions





Friday, February 21, 2025 at 4:00 PM EST

## Teen Movie Night

129 N Mill St, Birdsboro, PA, United States, Pennsylvania 19508

Join us for a Teen Movie Night for a showing of "TRAP" Directed by M. Night Shyamalan rated PG-13. Come enjoy the movie and some free popcorn on us. You **MUST** be 13 years or older or accompanied by an adult. Movie starts at 4:00. Run time is 1 hr. 45 minutes. No registration required.

---

# Business Licenses



**All businesses located within Amity Township are required to register and pay a fee to receive a business license. Registrations and payment must be completed no later than March 31<sup>st</sup> to avoid a penalty.**

Businesses that do not comply may be subject to a fine of not more than \$600.00.

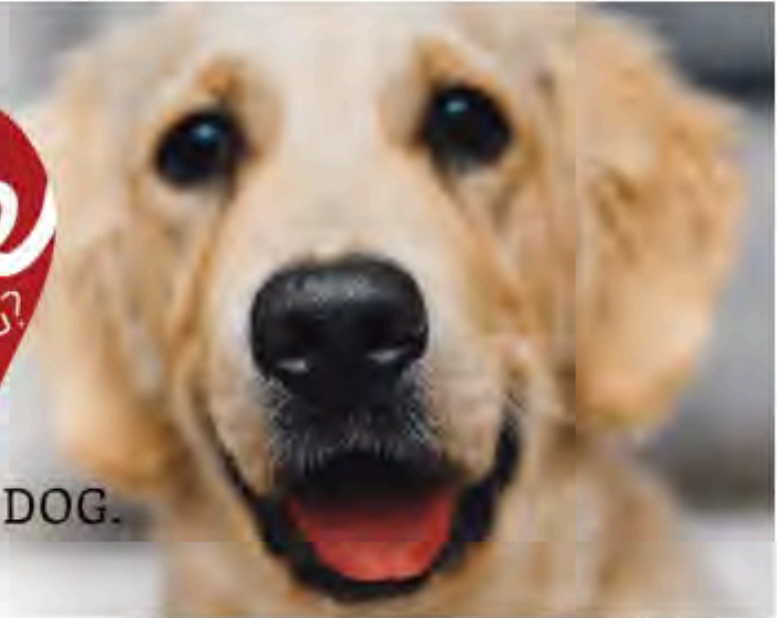
Businesses must renew their licenses each calendar year.

**\*Home Occupations and No Impact Home Based Businesses are EXEMPT from these requirements\***

**For more information or questions contact 610-953-0045.**

**Register or Renew Here!**

---



LICENSE YOUR DOG.

**Pennsylvania State Law mandates that all dogs 8 weeks or older must be licensed. Dog Licenses must be purchased by January 1 of each year regardless of when the license was purchased the previous year. Licenses are valid from January 1 to December 31 for the current year.**

**NO LICENSE = \$500.00 FINE + COURT COST/PER DOG.**

**Register Here!**

---



**If you find or lose a pet within Amity Township, please call the Township at (610) 689-6002 or after hours, (610) 655-4911.**

**If you use Facebook and can hold the found animal for a period of time, please post dogs to @BerksDogSearch as well as @Amity Township, Berks County, PA**

**For cats, please post to @BerksCountyCatSearch and @Amity Township, Berks County, PA.**

---



**A few items to consider:**

-Put recycling out the night before your scheduled pick-up (i.e., Monday night for Tuesday pick-up).

-If your pickup falls on a holiday week, then the pick-up is pushed out one day. We have flyers that show the schedule available in our lobby.

-Break down your boxes so more materials can fit in the truck.

-Call immediately to report missed pick-ups at 610-953-0016. We can sometimes get it picked up that day if reported early enough.

-Trash cans marked with other providers' logos will not be picked up if put out for recycling. (example J.P. Mascaro will not pick up a Whitetail Disposal can, full of recyclables).

-Old or damaged bins can be marked for recycling and left out on your pick-up day. You can also place them in the grassy area next to the front door of the Township building and our staff will dispose of them.

**If you need a recycling bin or to replace one, we have two kinds available at our office for pickup Mon-Fri 8:00am-4:30pm. We have a round bin with a lid or a rolling bin with a lid. Unfortunately, we do not deliver bins.**

**A friendly reminder to commercial business owners that letters went out regarding the recycling reporting requirements for Amity Township per Ordinance 91-127 and Resolution 14-10. Commercial business owners must complete the enclosed form by January 30, 2025.**

---



## St. Lawrence-Exeter-Amity-Douglass Joint Comprehensive Plan Community Survey

Beginning in September of 2024, St. Lawrence, Exeter, Amity, and Douglass have teamed up to create a joint comprehensive plan together. A joint comprehensive plan is a long-term document that guides the community's goals and a vision for its future. It is a roadmap that will provide framework for communities for policy, land use, and infrastructure decisions, balancing development with the natural environment surrounding us.

**We NEED YOUR HELP!** If you live, work, or play in St. Lawrence, Exeter, Amity, or Douglass, please consider adding your voice below. **Your participation will make the community even stronger!** Thank you!

[Complete the Survey Here!](#)

---



# PUT A THERMOMETER ON FREEZE WINTER FIRES

Home fires occur more in winter than in any other season. As you stay cozy and warm this winter season, **be fire smart!**

**Half of all home heating fires** occur in the months of



Heating equipment **1** is involved in every **7** reported home fires and **1** in every **6** home fire deaths.



Keep portable generators outside, away from windows, and **as far away as possible from your house.**

**Install and test** carbon monoxide alarms at least **once a month.**



Have a qualified professional clean and inspect your chimney and vents **every year.**



Store cooled ashes in a tightly covered metal container, and keep it outside at least

**10** feet

from your home and any nearby buildings.

Keep anything that can burn at least

**3** feet from any heat source like fireplaces, wood stoves, radiators, or space heaters.



Plug only **1** heat-producing appliance (such as a space heater) into an electrical outlet at a time.



For more information on how to prevent winter fires, visit [www.usfa.fema.gov/winter/](http://www.usfa.fema.gov/winter/) and [www.nfpa.org/winter/](http://www.nfpa.org/winter/)



## HANDY TIPS TO

# AVOID FROZEN PIPES

## THIS WINTER



### BEFORE THE COLD WEATHER SETS IN



Check sprinkler or irrigation systems. Make sure everything is turned off and drained.



Eliminate sources of cold air near water lines. Fix drafty windows and plug drafts around doors. Identify your home's freezing points.



Know how to shut off your water.



Protect your pipes. Wrap them with insulation.

### WHEN TEMPERATURES STAY BELOW FREEZING



If pipes run through cabinets or vanities, open the doors to let warmer room temperatures flow in.



Keep water moving through the pipes by allowing a small trickle of water to run.

### BUT IF YOUR PIPES DO FREEZE



Shut off the water immediately.



Thaw pipes with warm air, with a hair dryer or space heater. Do not leave space heaters unattended and do not use kerosene heaters or open flames.



Be careful turning water back on. Once pipes are thawed, slowly turn the water back on and check pipes and joints for any cracks.

# Shake your mailbox

This simple trick will get you ready for winter.



Winter is coming. Don't let your mailbox become a casualty of winter weather.



Damaged mailboxes can be hazardous to drivers if they come loose.



Mailboxes that aren't sturdy are more likely to break or be damaged by heavy snow, wind and the force from plows.



To check the sturdiness of your mailbox, shake it by the post and if it "gives," it's likely that your mailbox could come loose this winter.



**If you believe your mailbox was damaged by our plows during a snowstorm, please call our Roads Department at 610-953-0018. The plow must physically hit the post or the box.**

**VIOLATORS  
SUBJECT  
TO FINE**



**If there is 1" or more of snow and/or ice accumulation, vehicles must be removed from the street. Vehicles not in compliance will be fined \$40.00 per day.**

---

# RIGHT OF WAY & EASEMENTS



The **public right of way** is property dedicated to the city for public infrastructure like roadways, storm sewers, sidewalks and streetlights. The state also allows utility providers to use the public right of way for their facilities.

**Utility easements\*** are areas of a property dedicated for utilities to deliver services such as electricity, gas, water, sanitary sewer, telephone, internet and cable.

The land belongs to the homeowner, but utilities can access easements to perform routine maintenance, construct improvement projects and repair utility lines during emergencies.

*\*Not all properties have utility easements in the same location. The ones included in this illustration likely do not reflect where the ones on your property may be. All easements should be shown on the title work and plot plan provided at the time your property was purchased.*

**Landscaping is generally not permitted within a utility easement because it could potentially interfere with the utility company's access to their lines and equipment, meaning you should avoid planting large trees, shrubs, or installing structures that could obstruct maintenance work in that area. If the utility feels the landscaping hinders their service or is in their right of way, then it can be removed without permission from the homeowner or business owner.**

---



Residents struggling with their home heating bills may apply for assistance from the Low-Income Home Energy Assistance Program (LIHEAP).

LIHEAP is a federally funded program that helps individuals and families pay their heating bills through home heating energy assistance grants. It also provides crisis grants to help in the event of an emergency or if a resident is in danger of losing his or her heat due to broken equipment, lack of fuel or termination of utility service.

The income eligibility guidelines for LIHEAP are \$22,590 for an individual, \$30,660 for a couple and \$46,800 for a family of four. Residents may apply for LIHEAP online, by phone 610-736-4228 or by contacting their local county assistance office 610-736-4211.

The program runs through April 4, 2025.

[Apply Now!](#)

---

# BERKS COUNTY

## HOUSEHOLD HAZARDOUS WASTE

**ALL RESIDENTS MUST PRE-REGISTER FOR THIS EVENT**  
**(RESIDENTS OF BERKS COUNTY (ONLY))**

APRIL 12, 2025 (8:00 AM – NOON)  
GOVERNOR MIFFLIN INTERMEDIATE SCHOOL  
600 GOVERNOR DRIVE  
SHILLINGTON, PA. 19607

### WHAT IS HOUSEHOLD HAZARDOUS WASTE?

Household Hazardous Waste is any household product which is labeled:

CAUTION	DANGER
FLAMMABLE	EXPLOSIVE
TOXIC	WARNING
CORROSIVE	EXPLOSIVE
POISON	VOLATILE

or a combination of these characteristics. Look for warning or skull and crossbones on label. Use this list to identify and collect hazardous products which are no longer usable or wanted. Select a product suited for the job at hand but buy only what you can use entirely.

### WHY COLLECT HOUSEHOLD HAZARDOUS WASTE?

These collection days are intended to provide Berks County residents with a responsible way to dispose of old, unusable and unwanted hazardous products. Putting them in the trash or down the drain contributes to the pollution of our air and drinking waters.

### HOW TO BRING MATERIALS TO OUR COLLECTION SITE?

- Do not mix the materials
- Tighten lids on all containers. If containers are leaking, pack in larger containers
- Bring all materials in original containers with labels, if possible.
- If not in original labeled container, please label container used

### ACCEPTABLE MATERIALS

#### OIL PAINTS



- Turpentine
- Wood Preservatives
- Paint Thinners & Solvents
- Oil Based Paints, Varnishes and Stains  
**(ABSOLUTELY NO LATEX PAINT WILL BE ACCEPTED)**



#### OUTDOORS

- Weed Killers
- Pesticides
- Asphalt & Driveway Sealants
- Pool Chemicals
- Herbicides & Fungicides

#### AUTOMOTIVE



- Antifreeze
- Gasoline
- Transmission Oil
- Motor Oil
- Automotive paints and finishes



#### HOUSEHOLD

- Solvents
- Disinfectants
- Rug, Oven & Drain Cleaners
- Button Batteries
- Photographic Chemicals
- Floor & Furniture Polish
- Lithium & NiCad Batteries
- Fluorescent bulbs

### DO NOT BRING

- Latex Paint will not be accepted \*
- Joint & Caulking Compound
- Organic Peroxides
- Gas Cylinders
- Explosives & Ammunition
- Radioactive Waste
- Infectious or Medical Waste
- Water based sealants

\* Allow materials to dry and discard with regular trash.

Empty containers should be placed out with your regular trash.

**BERKS COUNTY RESIDENTS ONLY**  
**PRE-REGISTRATION REQUIRED**

April 12, 2025

Governor Mifflin Intermediate School  
600 Governor Drive  
Shillington, Pa. 19607

8:00 AM – 12:00 PM  
Rain or Shine

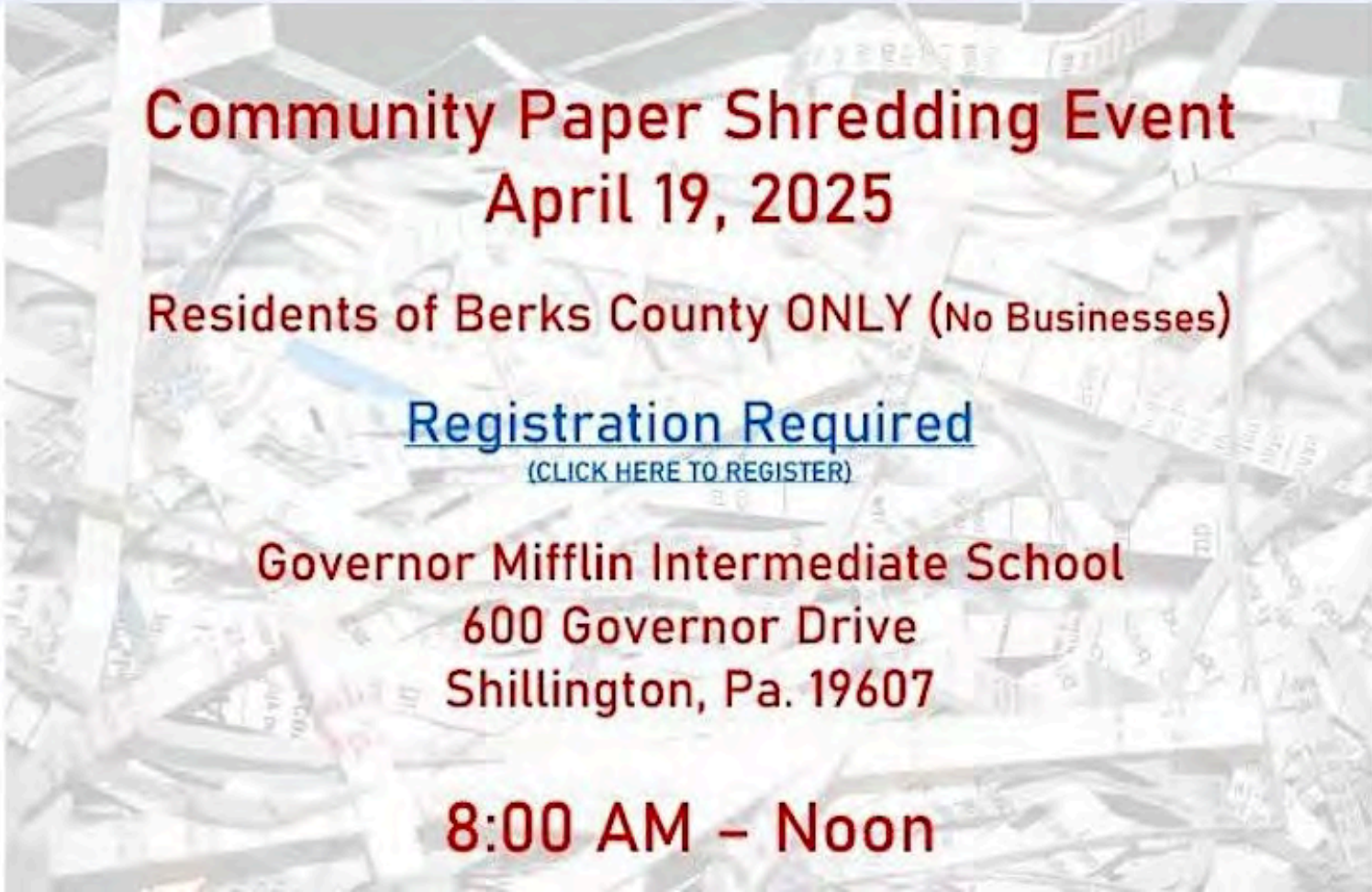
TO REGISTER GO TO

[www.countyofberks.com/swa](http://www.countyofberks.com/swa)

#### Instructions

- All waste must be in trunk of car or bed of truck.
- Stay in your vehicle at all times

**Register Here!**



**Community Paper Shredding Event**  
**April 19, 2025**

**Residents of Berks County ONLY (No Businesses)**

**[Registration Required](#)**

**(CLICK HERE TO REGISTER)**

**Governor Mifflin Intermediate School**

**600 Governor Drive  
Shillington, Pa. 19607**

**8:00 AM – Noon**

**Register Here!**

---



## **Electronics**

Electronic Recycling Center is open every  
Tuesday, Thursday and Saturday from 8:00 AM - Noon  
Free for residents of Berks County

**All Visitors Must Remain In Their Vehicle, While On  
Site.**

Please Have All Electronics In The Trunk Of Your Car Or Bed  
Of Pickup Truck

---



# Lithium Battery Disposal

**BATTERIES  
CAN SPARK  
OR EXPLODE**

They don't belong in recycling or trash.



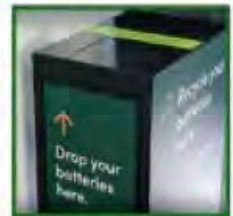
**Tape it. Bag it. Drop it.**



Tape battery terminals



Place in a small zip lock bag



Drop into a battery recycle box or provided carton

Lithium-ion (Li-ion) batteries are used in many products such as electronics, toys, wireless headphones, handheld power tools, small and large appliances, electric vehicles, and electrical energy storage systems. If not properly managed at the end of their useful life, they can cause harm to human health or the environment. Lithium-ion batteries and devices containing these batteries should **NOT** go in household garbage or recycling bins.

Lithium-ion batteries **SHOULD** be taken to separate recycling or household hazardous waste collection points.

To prevent fires, tape battery terminals and/or place lithium-ion batteries in separate plastic bags.

## **Real ID to be in Effect on May 7<sup>th</sup>**



**Beginning May 7, Pennsylvanians will need a REAL ID-compliant license/identification card or other federally acceptable identification (such as a valid passport or military ID) to board domestic commercial flights or enter a military installation or federal facility that requires ID.**

**To get a REAL ID, you must bring your documents to a driver licensing center for verification in person. Learn about the specific items that are required to be issued a REAL ID. The website also offers the option to pre-verify online if your documents are already on file with the Pennsylvania Department of Transportation.**

**REAL ID is optional. It is not required to drive, vote, access hospitals, visit the post office, access federal courts or apply for or receive federal benefits.**

---



Thursday, February 13th at 7:00PM - Planning Commission

Tuesday, February 18th at 7:00PM - Parks & Recreation

Wednesday, February 19th at 7:00PM - Board of Supervisors

**Meetings are held at the Township building, 2004 Weavertown Road.**

---

### Amity Township Board of Supervisors

Kim McGrath, Chairperson / Dave Hackett, Vice Chair

Paul "Skip" Weller, Terry Jones, and Kevin Keifrider



*Copyright (C) 2025 Amity Township. All rights reserved.*

Our mailing address is:  
Amity Township  
2004 Weavertown Rd  
Douglassville, PA 19518